



DORSET FIRE AND RESCUE SERVICE

Fire Investigation Report

In respect of

**Lytchett Minster School
Post Green Lane
Lytchett Minster
Dorset
BH16 6JD**

**Incident Number 012211
Thursday 27th December 2012**

Introduction

I, Jason Lee Rogers am currently employed by Dorset Fire and Rescue Service as a Station Manager. I have been a Fire-fighter since January 1999 and am currently employed in the role of Fire Safety Manager - Policy and Risk at Service Headquarters, Peverell Avenue West, Dorchester, Dorset, DT1 3SU

Further to my normal role, I am also a Fire Investigation Officer and I was trained by Gardiner Associates Training and Research between Monday 24th September and Friday 5th October 2012.

On Thursday 27th December 2012 I received a pager message from the Dorset Fire and Rescue Service Fire Control Room instructing me to proceed to Lytchett Minster School, Post Green Lane, Lytchett Minster, Dorset, BH16 6JD. I was requested to attend as a Fire Investigation Officer.

At approximately 09.39hrs hours, acting on the information received, I arrived at the address above. I met with Assistant Chief Fire Officer Ben Ansell, who was the Incident Commander at that time.

After receiving a summary of the incident and update of the current operational activities at the scene, from Assistant Chief Fire Officer Ben Ansell, I began the fire investigation.

Purpose of this report

The purpose of this report is to: -

- Detail the action taken by Dorset Fire and Rescue Service
- Present the information available
- Detail the observations of the Fire Investigation Officer
- Determine the most likely cause of fire, where possible
- Assist in the prevention of similar fires in the future

Contents

1	Details of call
2	External agencies involved
3	Details of premises / Details of location of incident
4	Events before arrival of Dorset Fire & Rescue Service
5	Action by Dorset Fire & Rescue Service
6	Post-fire observations
7	Possible sources of ignition
8	Considered opinion
9	Plans
10	Photographs
11	Incident Recording System Report
12	Incident log
13	Signatures
14	Appendices:
	A – Witness Statement from Crew Manager Courtice and Fire-fighter Tompkins

Abbreviations

Standard Dorset Fire & Rescue Service abbreviations used throughout this document:

General	
DFRS	Dorset Fire & Rescue Service

Appliances	
WRT	Water Tender
WRL	Water Tender Ladder
ALP	Aerial Ladder Platform
HRT	Heavy Rescue Unit
ISU	Incident Support Unit
CSU	Command Support Unit
ESU	Environmental Support Unit

External Agencies	
CSI	Crime Scene Investigator
FS	Forensic Scientist Police/Independent Appointment

Roles	
Ff	Fire-fighter
CC	Crew Commander
WM	Watch Manager
SM	Station Manager
GM	Group Manager
AM	Area Manager
ACFO	Assistant Chief Fire Officer
DCFO	Deputy Chief Fire Officer
CFO	Chief Fire Officer
PRO	Press Officer
FIO	Fire Investigation Officer
IC	Incident Commander

Full longhand titles are used for any not listed above.

1

Details of call

Call received by a member of the public, neighbouring the Lytchett Minster School, using a mobile telephone connected to the Vodafone network

Address of Incident

Lytchett Minster School
Post Green Lane
Lytchett Minster
Dorset
BH16 6JD

Date of Incident

27/12/2012

Time of call to DFRS

07:06:29

Time of Arrival

07:23:05 hours

Initial Attendance	App type	Call sign	IC	No. of riders
	WRL	18P2	WM Cooper	5
	WRT	18P4	WM Crabb	5
	Role	Name	Call sign	
Initial Incident Commander	WM	Cooper	-	
Incident Commander	ACFO	Ansell	B4	
Fire Investigation Officer	SM	Rogers	S26	

2

External agencies involved

External Agency Name/Contact details Additional information	Dorset Police
External Agency Name/Contact details Additional information	South Western Ambulance Service Trust
External Agency Name/Contact details Additional information	Dorset County Council - Estates
External Agency Name/Contact details Additional information	Dorset County Council – Structural Engineers
External Agency Name/Contact details Additional information	Purbeck District Council - Surveyors
External Agency Name/Contact details Additional information	ADT – Fire and Security
External Agency Name/Contact details Additional information	Wessex Water
External Agency Name/Contact details Additional information	Southern Electric
External Agency Name/Contact details Additional information	

3

Details of Lytchett Minster School site/ location of incident

3.1 This incident involved the Creative Arts Block within the site of Lytchett Minster School, Post Green Lane, Lytchett Minster, Dorset, BH16 6JD

Location of incident - Creative Arts Block



4

Events before arrival of Dorset Fire & Rescue Service

At approximately:-

06:01hrs a flash of light and lightning strike is recorded on the Lytchett Minster School Closed Circuit Television (CCTV). The CCTV camera is located on the roof of the school reception building approximately one hundred metres from, and facing the Creative Arts Block. Whilst pointing in the direction of the Creative Arts Block some of the building is obscured by the Maths, Science and Humanities block.

06:00hrs a farm owner, neighbouring the Lytchett Minster School, states that he and his wife are awoken, in their private dwelling, by a flash of light and loud bang. As his wife gets up to use the toilet she notes that all of the lights within their premises are not working.

The Farmer then gets dressed with the intent to check the animals on his farm.

Whilst checking the condition of his animals and farm buildings the Farmer states that “all of the lights and fuses in his farm had blown” but his animals and property were unaffected.

07:00hrs The Farmer leaves his farm and walking towards Post Green House, notices a red glow coming from the direction of Lytchett Minster School, approximately 300 yards away through trees. The Farmer further describes the red glow stating that “it looked like an orange floodlight glow”.

07:06hrs The Farmer makes an emergency 999 call, using his mobile telephone and speaks to the Dorset Fire and Rescue Service Fire Control Room (call recorded).

The Farmer states “We have been hit by lightning” and when questioned by the Fire Control Room Operator further states that he believes the Lytchett Minster School is on fire.

07:07:53hrs The Fire Control Room Operator creates an emergency incident – Action Plan PF – Property Fire whilst continuing to clarify the incident details with the Farmer

07:08:29hrs Dorset Fire and Rescue Service fire appliances, call sign 18P2 (WRL) and 18P4 (WRT), are alerted and mobilised to the Lytchett Minster School to investigate.

5

Action by Dorset Fire & Rescue Service

At approximately:-

07:20hrs Dorset Fire and Rescue Service (DFRS) fire appliance 18P2, with Watch Manager (WM) David Cooper as Officer in Charge (OIC), approach gates leading to the Lytchett Minster School site.

WM Cooper tasks a member of his crew, Fire-fighter (Ff) Tompkins, to go ahead on foot towards the building, with a hand held radio, to investigate the extent and exact location of the fire while access is sought for 18P2.

07:22hrs Responding to information received from Ff Tompkins, WM Cooper makes a request to the Fire Control Room for additional resources "make pumps 5 fire in main building roof space of school ALP required".

Assistance message acknowledged by DFRS Fire Control Room – fire appliances, call sign 14P1 (WRL), 15P1(WRL), 19P1(WRL), Aerial Ladder Platform call sign 07A1 and Water Carrier call sign N902 are assigned to this incident.

07:23hrs WM Cooper confirms 18P2 is in attendance and tasks his crew to use bolt croppers to cut the padlocks on the gates to gain access to the Lytchett Minster School site. Ff Tompkins informs WM Cooper, by hand held radio, that the fire involves the Creative Arts Block to the rear of the site. 18P2 is driven to rear of that location.

07:24hrs Bronze Commander – Station Manager David Graham is mobilised to this incident.

In a statement of his observations Ff Tompkins reports, "I could hear an alarm sounding from the building (the Creative Arts Block). The alarm was a bell type. A fire was evident on the roof of the building"

When questioning the crew of 18P2, on the morning of the incident, WM Cooper, Crew Manager (CM) Courtice and Ff Tompkins stated;

- There was no sign of a forced entry to the Art Block (Creative Arts Block). The windows and doors were all secure
- A forced entry was made to the rear of the premises to access the ground floor corridor and staircase (later identified as Lobby 2 on plans provided) and also to the main entrance to the these premises (later identified as Lobby 1 on plans provided) to gain access to the fire alarm panel
- The fire alarm panel showed a flashing light at Zone 54 (Zone 54 is identified as 'ART BLOCK ROOF SPACE' in the key located next to the fire alarm panel)
- The fire alarm panel "Looked as if it had been silenced but not reset".
- There was nothing showing on the ground floor or first floor (indicating no sign of fire)
- Looking up from the first floor through roof lights and windows, flames could be seen in the centre of the roof. Nothing could be seen from the inside due to suspended ceilings
- Lots of water was coming through the ceiling, in two/three separate places
- No route could be found to access the 2nd floor plant room/roof space

WM Cooper tasks his crew to pitch a ladder, from 18P2, to the façade of the premises in an attempt to gain access to the roof.

Fire-fighters using the ladders report “could see the fire over an apex of roof but could not fire fight without spraying the water in the air first”

WM Cooper tasks CM Courtice and Ff Tompkins to enter the premises using breathing apparatus (BA) a high pressure hose reel jet (HRJ) and thermal imaging camera (TIC) to continue to locate an access point to the roof space and fire fight.

Entering the premises a second time CM Courtice highlights the following in his statement (Appendix A);

“On arrival on the first floor there was a noticeable difference in conditions. The hall way was now smoke logged with large pieces of hot (and liquid) metal falling through the ceiling, a message was sent requesting another BA team with a main jet. On the second teams arrival it was obvious that we were not going to be able to extinguish the fire internally and was soon told to exit the building for safety reasons by the OIC. At this time we could hear debris falling down the lift shaft. We exited the building and went for debrief at the ECO”

Whilst in the premises CM Courtice and Ff Tompkins capture three images on the thermal imaging camera highlighting the molten lead and materials falling from the first floor ceiling/roof space.

FF Tompkins records in his statement (Appendix A), in regards to efforts to fight the fire from within the premises, *“After a short period of time, 5-10 mins, conditions inside the corridor on the first floor deteriorated very quickly. Visibility went down to zero and a serious fire was now evident in the ceiling area and class rooms. Molten lead and debris was cascading down from above and a request to Alpha entry control was made for a second BA team with a main line. Using the TIC, I could direct the jets onto the fire however it was now evident that the fire had reached a point where our efforts were futile”*. This identifies aggressive fire fighting tactics used in an attempt to extinguish the fire.

07:28hrs Assistance message sent to the Fire Control Room from WM Cooper – Make pumps 10. This indicates the need for ten fire appliances and crew at this incident at that time.

07:31hrs 18P4 arrives on scene with OIC Watch Manager Crabb

All further fire fighting operations were carried out from outside of the premises at that time. This was due to the fire in the roof space not being accessible from within the premises and the internal structural collapse of the ceilings and roof spaces which presented an uncontrollable and significant risk to Fire-fighter safety.

6

Post-fire observations

- 6.1 The Lytchett Minster School is fitted with a Closed Circuit Television (CCTV) system.
- 6.2 On Thursday 27th December 2012 one CCTV camera, positioned on the roof of the main school reception building captured an image of a flash of light and lightning striking the Creative Arts Block, within the school site.
- 6.3 Image to show the day time view of the CCTV position.



- 6.4 Image showing lightning striking the Creative Arts Block at 06:01:42hrs on Thursday 27th December 2012.



- 6.5 A transparent representation of image 6.4 overlaid on to image 6.3 to provide the lightning strike location in context to the Creative Arts Block. The school lights have been used as a point of reference to support scale and accuracy.



- 6.6 A sequential series of images of the lightning strike on the Creative Arts Block, captured by the Lytchett Minster School CCTV follow:-

- 6.7 Image captured at 06:01:41hrs – Rain is visible and water is gathering on the pavement.



6.8 Image captured at 06:01:42hrs – CCTV records a flash of light



6.9 Image captured at 06:01:42hrs of a lightning strike to the Creative Arts Block roof area.



6.10 Image captured at 06:01:42hrs of a fire in the location of the lightning strike



6.11 Image captured 06:01:43hrs of a fire in the location of the lightning strike



- 6.12 Image captured approximately one minute later at 06:02:45hrs, of a sustained fire in the location of the roof area



- 6.13 Image captured one minute later at 06:03:45hrs a fire developing in the roof area



- 6.14 Image captured approximately one minute later at 06:04:23hrs of a significant down pour of rain although the fire in the roof area remains unaffected



- 6.15 Image captured at 06:27:42hrs of a significant fire developing in the roof area.



- 6.16 Image captured at 06:39:23hrs showing the continued development of the fire in the roof area.



- 6.17 Image captured at 07:21:23hrs of Fire-fighter Tompkins approaching the Creative Arts Block to investigate the location and extent of the fire, as instructed by WM Cooper of the first attending Dorset Fire and Rescue Service fire appliance.



- 6.18 Image captured at 07:29:05hrs of an extensive fire affecting the Creative Arts Block illuminating surrounding trees adjacent to the Theatre area.



- 6.19 Post fire images provided by Lytchett Minster School of the automatic fire alarm panel fitted within the main entrance lobby of the Creative Arts Block. The panel has been opened for the benefit of these pictures.



6.20 Automatic fire alarm panel fitted within the main entrance lobby of the Creative Arts Block.



6.21 Image showing a closer inspection of the damage caused to the inside of the automatic fire alarm panel shown in image 6.20.



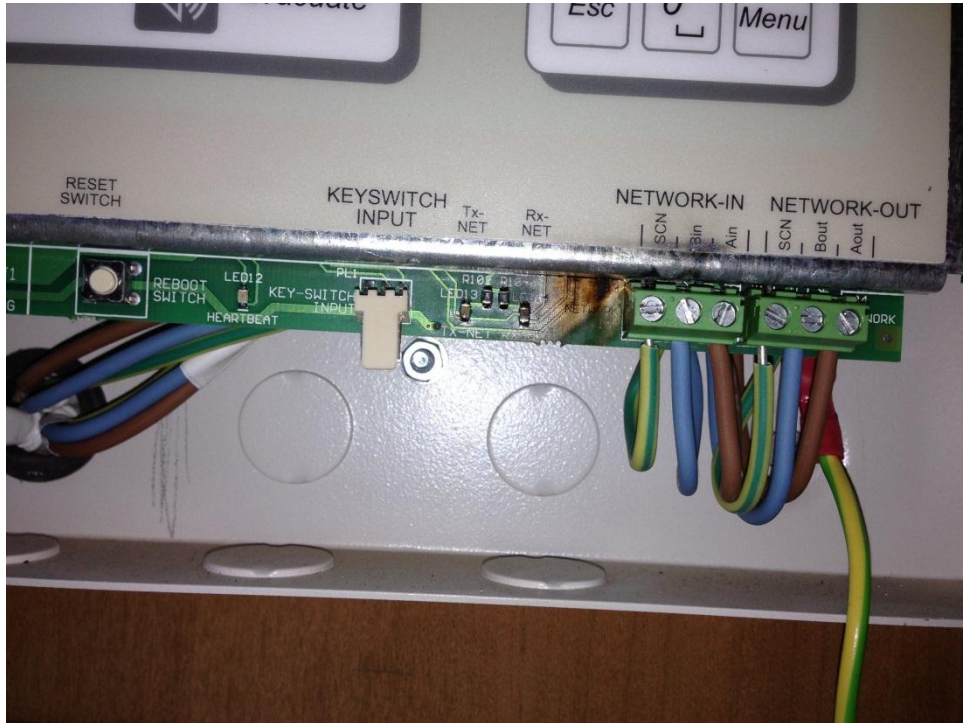
6.22 Image showing closer inspection of the damage caused to the automatic fire alarm panel electronic circuit boards.



6.23 Automatic Fire Alarm panel located in the Main Reception building of the Lytchett Minster School. This panel identifies fire alarm activations across the school site. The panel cover has been removed to inspect the electronic circuit boards.



- 6.24 This image identifies a closer view of image 6.21 in the area of the 'Network-In' connection. This connection links automatic fire alarm panels on the school site.



- 6.25 This image identifies damage to the inside cover of the fire alarm panel shown in image 6.23



- 6.26 Whilst fire fighting and attempting to gain a suitable point of access to the roof space of the Creative Arts Block, Crew Manager Courtice and Fire-fighter Tompkins, using a thermal imaging camera, capture images of the roof space above the first floor on the morning of Thursday 27th December 2012. The time recorded on the camera had not been adjusted to Greenwich Meantime Time (GMT) or synchronised, prior to the cameras use, and is therefore not correct in relation to this incident.
- 6.27 Thermal imaging camera pictures of molten lead, debris and part of the roof structure falling on to the first floor of the Creative Arts Block.



7

Possible sources of ignition

7.1 Smoking Materials

7.1.1 Lytchett Minster School operate a no smoking policy within their buildings. The Creative Arts Block was unoccupied at the time of the incident and the fire was located at high level on the roof. The school Caretaker, Mr Read, confirmed that he was the last person in the plant room/roof space, approximately one week prior to the fire, when he was recording water temperatures.

7.2 Electrical installation

7.2.1 Whilst electrical circuits were not independently tested no evidence was found of any faults in the supply to the premises. Residual Current Device (RCD) switches, located in the ground floor electrical cupboard in corridor 2, were found to be in the 'On' position and no switches had tripped. The Lytchett Minster School Bursar confirmed that electrical testing had been completed to the required standard. Copies of electrical test certificates are held with Dorset County Council but were not available at the time of this investigation.

7.3 Gas Supply

7.3.1 The Creative Arts Block was supplied with gas but it was not possible to investigate if a gas fault had contributed to this fire due to the significant fire damage and instability of the remaining structure. The Lytchett Minster School Bursar confirmed that gas testing had been completed to the required standard. Copies of gas test certificates are held with Dorset County Council but were not available at the time of this investigation.

7.4 Indications of deliberate ignition

7.4.1 There was no evidence of anyone entering the area recorded on the Lytchett Minster School CCTV. The doors and windows to the Creative Arts Block were found to be secure by the first attending fire crew, with no evidence of a forced entry.

7.5 Naked flame

7.5.1 Due to the significant damage caused by the fire, heat and smoke it was not possible to ascertain whether a naked flame had contributed to this fire.

7.6 Lightning

7.6.1 The Met Offices has confirmed that Dorset experienced a significant electrical storm, in the vicinity of Lytchett Minster School, producing confirmed lightning strike between 0600hrs and 0700hrs, on Thursday 27th December 2012.

7.6.2 CCTV situated on the roof of the Lytchett Minster School captured images of lightning striking the Creative Arts Block, Lytchett Minster School, at 06:01:41.

8

Considered opinion

- 8.1. It is my opinion, based upon the evidence gathered from witnesses, Fire-fighters and a detailed examination of the scene, that the most likely cause of this fire was :-

A direct lightning strike to the 2 nd floor plant room/roof space
--

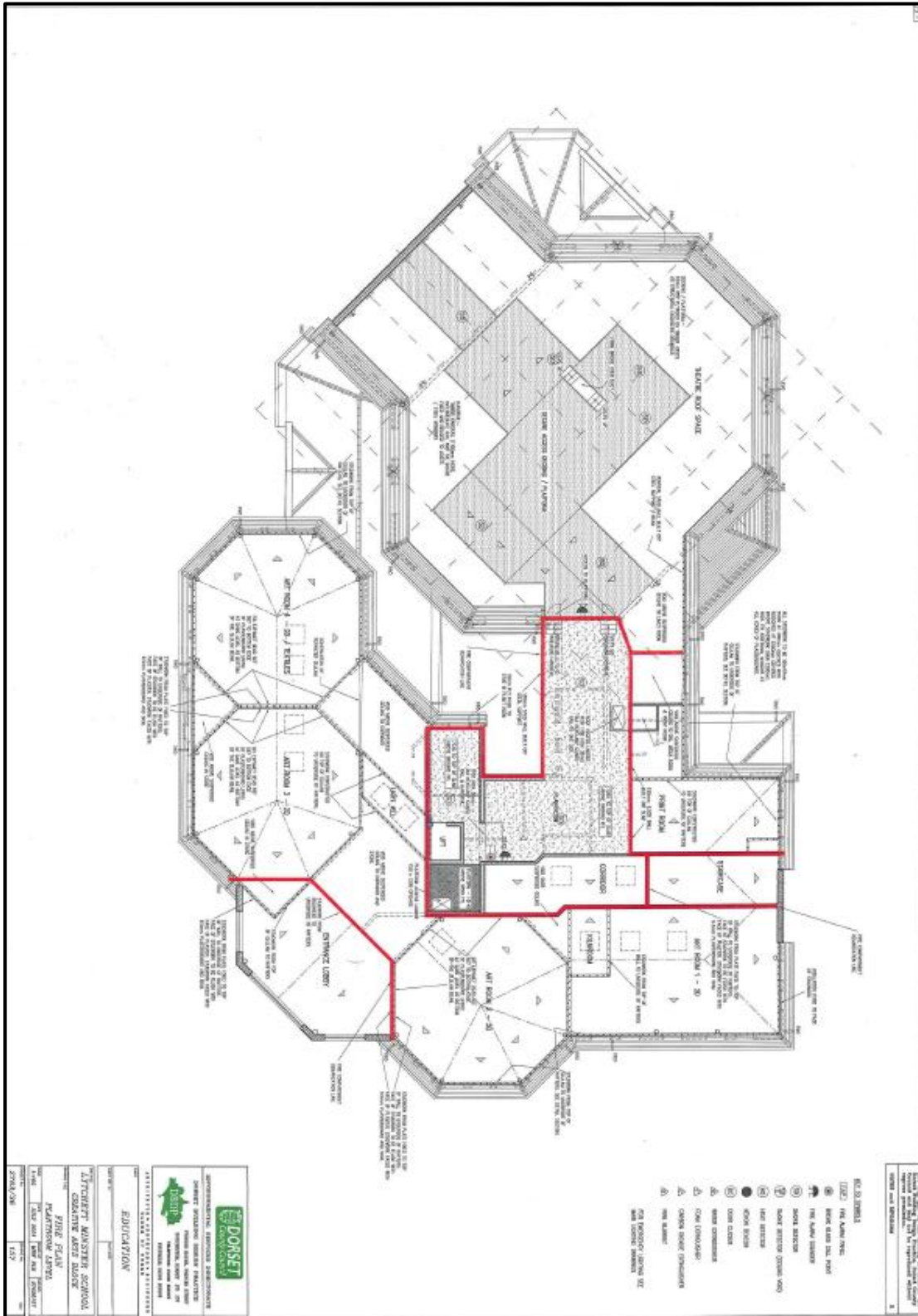
8.2. Supporting evidence

- 8.2.1. On the morning of Thursday 27th December 2012, at approximately 06:01hrs, an image of a lightning strike was recorded, by the Lytchett Minster School CCTV, to hit the 2nd floor plant room/roof area of the Creative Arts Block.
- 8.2.2. The Lytchett Minster School CCTV continued to record a developing fire in the 2nd floor plant room/roof space area, despite a significant down pour of rain following the lightning strike.
- 8.2.3. The time of a lightning strike in the area of Lytchett Minster School was verified by a neighbouring Farmer who was awoken by a flash of light and loud bang at approximately 0600hrs on the morning of Thursday 27th December 2012.
- 8.2.4. Met Office reports further verify that Dorset experienced a severe electrical storm resulting in confirmed lightning strikes across the County on Thursday 27th December 2012. Although not pin pointing a lightning strike directly over the village of Lytchett Minster a geographical tolerance is accepted by the Met Office due to lightning criteria and recording methods available.
- 8.2.5. There is evidence that the automatic fire alarm panel within the Creative Arts Block was damaged and disabled as a direct result of an electrical overcurrent possibly caused by the lightning strike.
- 8.2.6. There is evidence that the automatic fire alarm panel within the school Main Reception building was damaged and disabled by an electrical overcurrent possibly caused by the lightning strike and therefore did not activate or raise the alarm to the emergency services or other.
- 8.2.7. Dorset Fire and Rescue Service Fire Control have no record of an alert or autodial call to identify an activation of the automatic fire alarm system at the Lytchett Minster School.
- 8.2.8. It is confirmed that the first 999 emergency telephone call, highlighting a fire at the Lytchett Minster School, was received by a Dorset Fire and Rescue Service Fire Control Room Operator and recorded, from a Farmer neighbouring the school, at approximately 07:06hrs on Thursday 27th December 2012.
- 8.2.9. It can be accepted, based on the CCTV, witness and recorded evidence, that the fire located on the 2nd floor plant room/roof space area of the Creative Arts Block, Lytchett Minster School, was as a direct result of a lightning strike and was developing for approximately one hour and six minutes before Dorset Fire and Rescue Service were called for assistance.

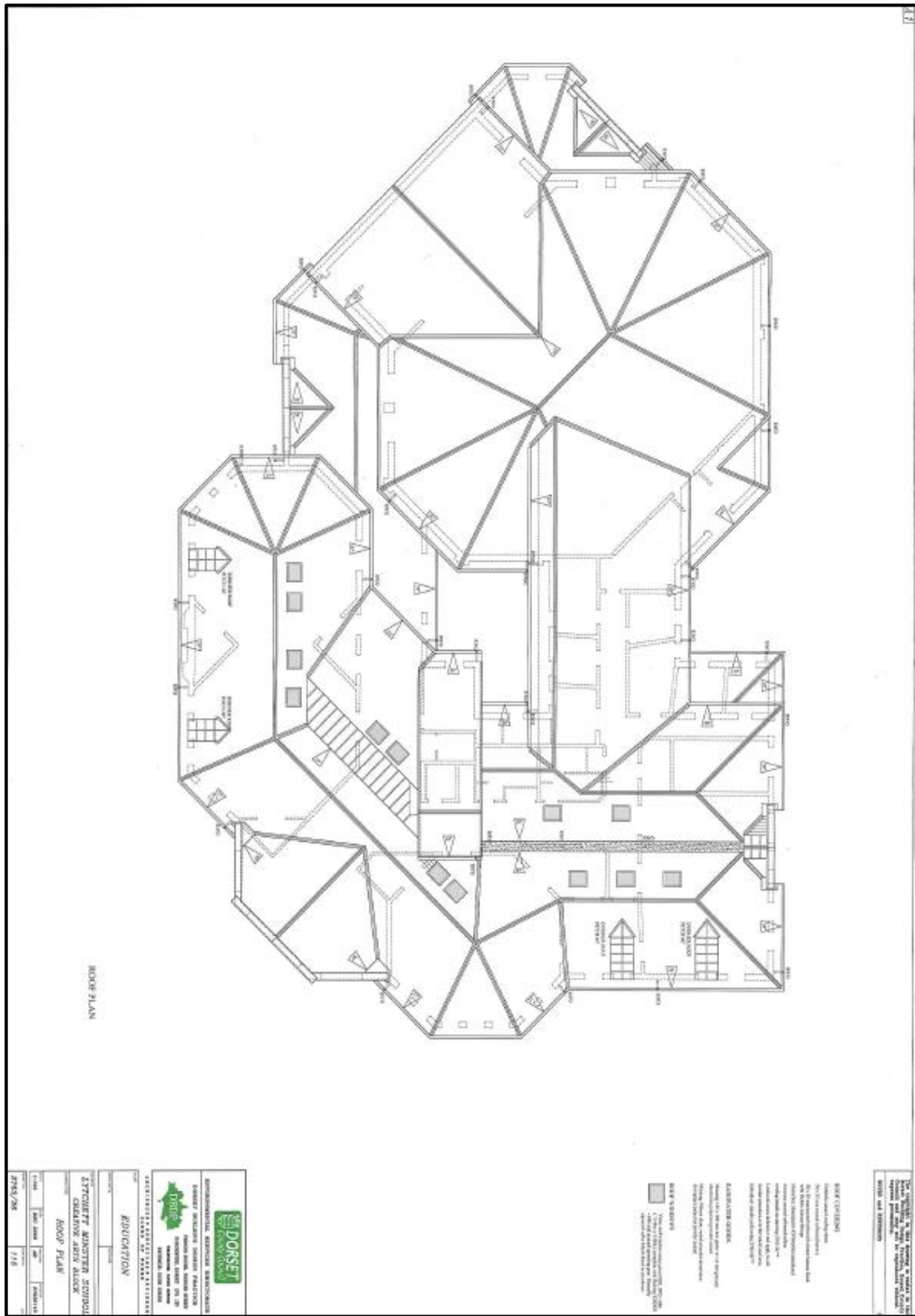
- 8.2.10. A number of lightning conductors were identified on the premises but no evidence was available to suggest lightning conductors were mounted on the roof of the 2nd floor plant room/roof space area. This area being the highest roof structure on the premises.
- 8.2.11. Lytchett Minster School CCTV continued to record a significant fire developing in the 2nd floor plant room/roof space area up until and during the attendance of Dorset Fire and Rescue Service.
- 8.2.12. Post fire photographic evidence identifies the following;
- 8.2.12.1. Fire spread travelling towards and damaging lightning conductors during fire development. Should a lightning conductor receive a lightning strike it is more probable a fire would start within that area and travel away to surrounding combustible materials.
- 8.2.12.2. Significant degradation and distortion of the fire resistant construction/compartimentation in the 2nd floor plant room area. This allowed the movement of hot gases and products of combustion to pass through roof voids and the air conditioning compartment/system which significantly contributed to fire spread.
- 8.2.12.3. The 2nd floor plant room door providing access to the roof above the 1st floor art rooms was missing. As it was not possible to access this area due to the structural instability of the building it could not be ascertained if this door was removed before the fire, burnt away during the fire or destroyed as a direct result of the lightning strike
- 8.2.12.4. The 2nd floor plant room area housing the air conditioning units was exposed to significant heat as supporting steel beams were collapsed and distorted. This area is provided with an open vent to the Theatre area.
- 8.2.12.5. Images taken of the air conditioning vent, from within the Theatre, identifies evidence of hot gases and products of combustion venting from the 2nd floor plant room, through the area housing the air conditioning and venting in to the Theatre roof void. It is probable that this would have ignited combustible materials within the Theatre roof space and significantly contributed to fire spread to that area.
- 8.2.12.6. Evidence of the fire spread indicates that the fire started in the area of the 2nd floor plant room/roof space and burned horizontally and vertically travelling through roof voids, air conditioning ducts and roof timbers towards external walls.
- 8.2.13. The initial reports from the attending fire crew of 18P2 confirmed a fire located in the centre of the roof space, consistent with the location of the lightning strike, on the Creative Arts Block.
- 8.2.14. The windows and doors of the Creative Arts Block were found to be secure by the fire crew of 18P2 when they first arrived on scene. There was no evidence of a forced entry.
- 8.2.15. The fire appears to have been at its most severe in the area of the 2nd floor plant room/roof space, consistent with the area identified as being struck by lightning, when the initial fire crew investigated the scene.
- 8.2.16. Fire crews were unable to gain access to the 2nd floor plant room as this was facilitated by the internal lift which was involved in fire.

- 8.2.17. Fire crews entering the premises wearing breathing apparatus record images of molten lead falling from the 2nd floor plant room/roof space area. This indicates an established fire producing significant temperatures. The melting point of lead is known to be 327.5 centigrade.
- 8.2.18. Post fire photography identifies significantly reduced fire and heat damage to the ground floor classrooms due to fire fighting tactics and the benefit of effective fire doors and intumescent (heat resistant) glass.
- 8.2.19. There were no indications of an electrical fault within the premises as Residual Current Devices (RCD's) and electrical isolation switches, located in the ground floor electrical cupboard, had not tripped.
- 8.2.20. A switch, located in the ground floor electrical cupboard, labelled 'Fire Damper' was noted to be in the 'On' position. It was not possible to further investigate the fire damper system, particularly in the 2nd floor plant room/air conditioning room due to the structural instability and access to that area.

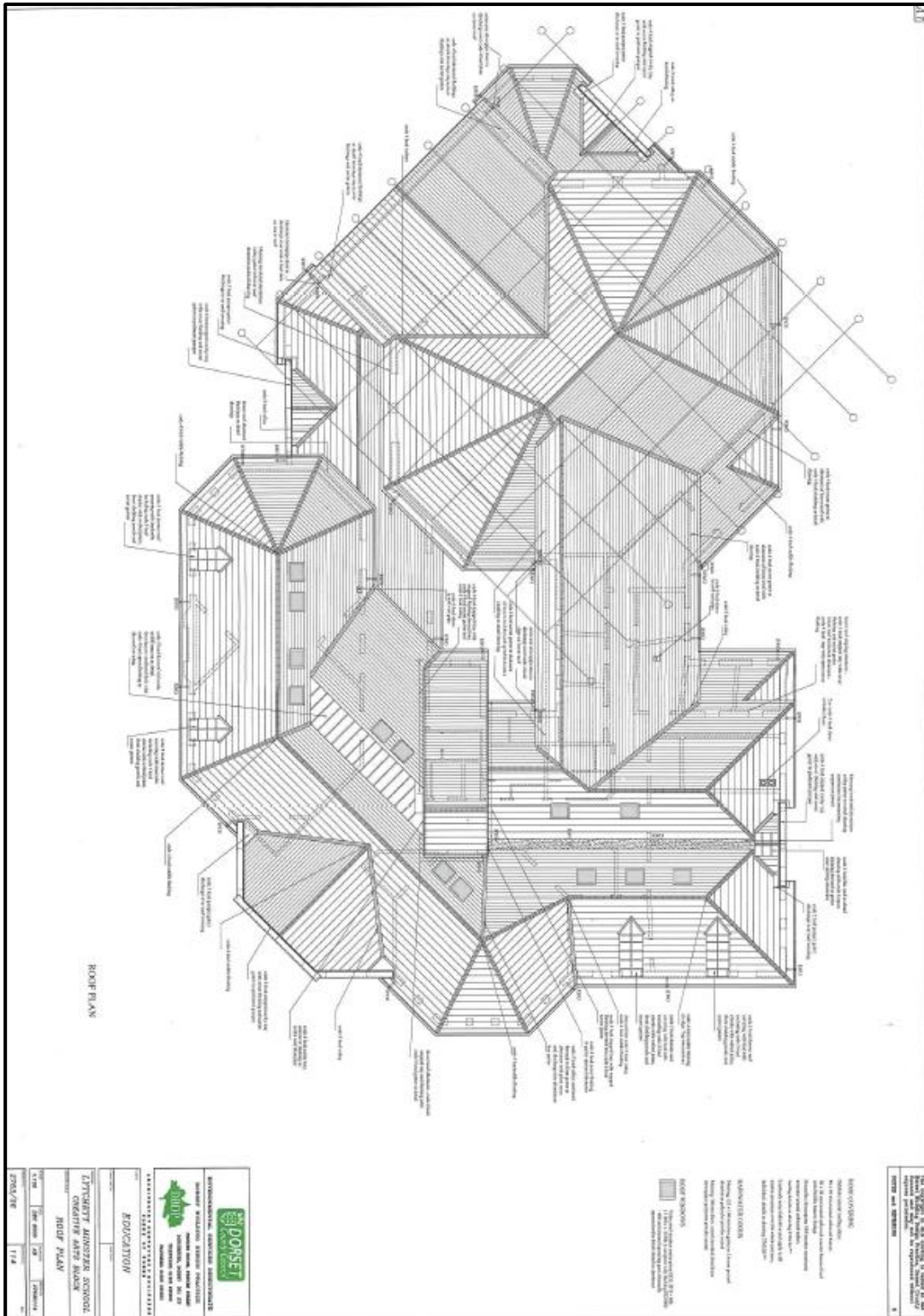
9.3 Plant Room (2nd Floor) – Fire Plan (red lines indicate a one hour fire resistant construction)



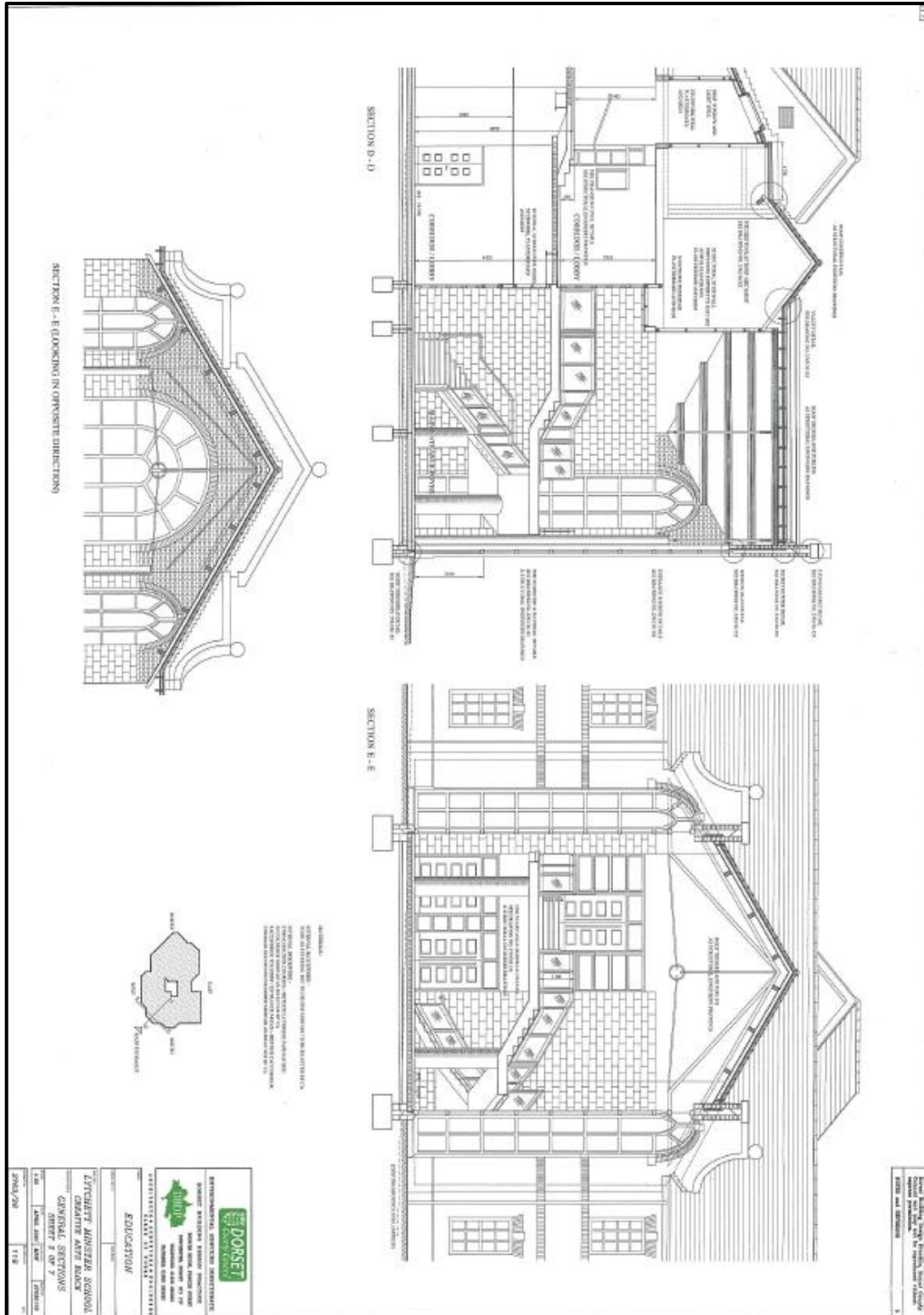
9.4 Roof Plan



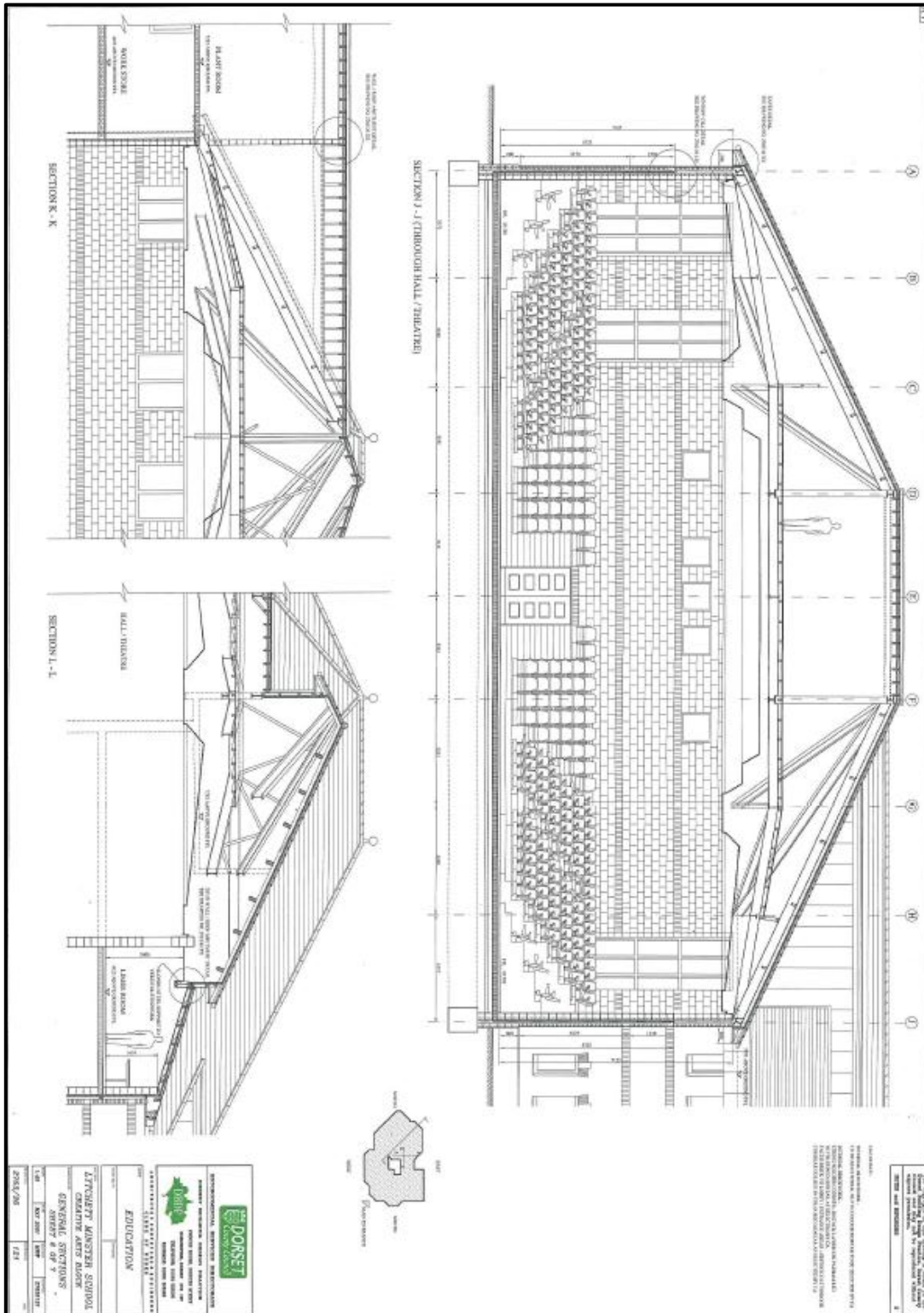
9.5 Roof Plan



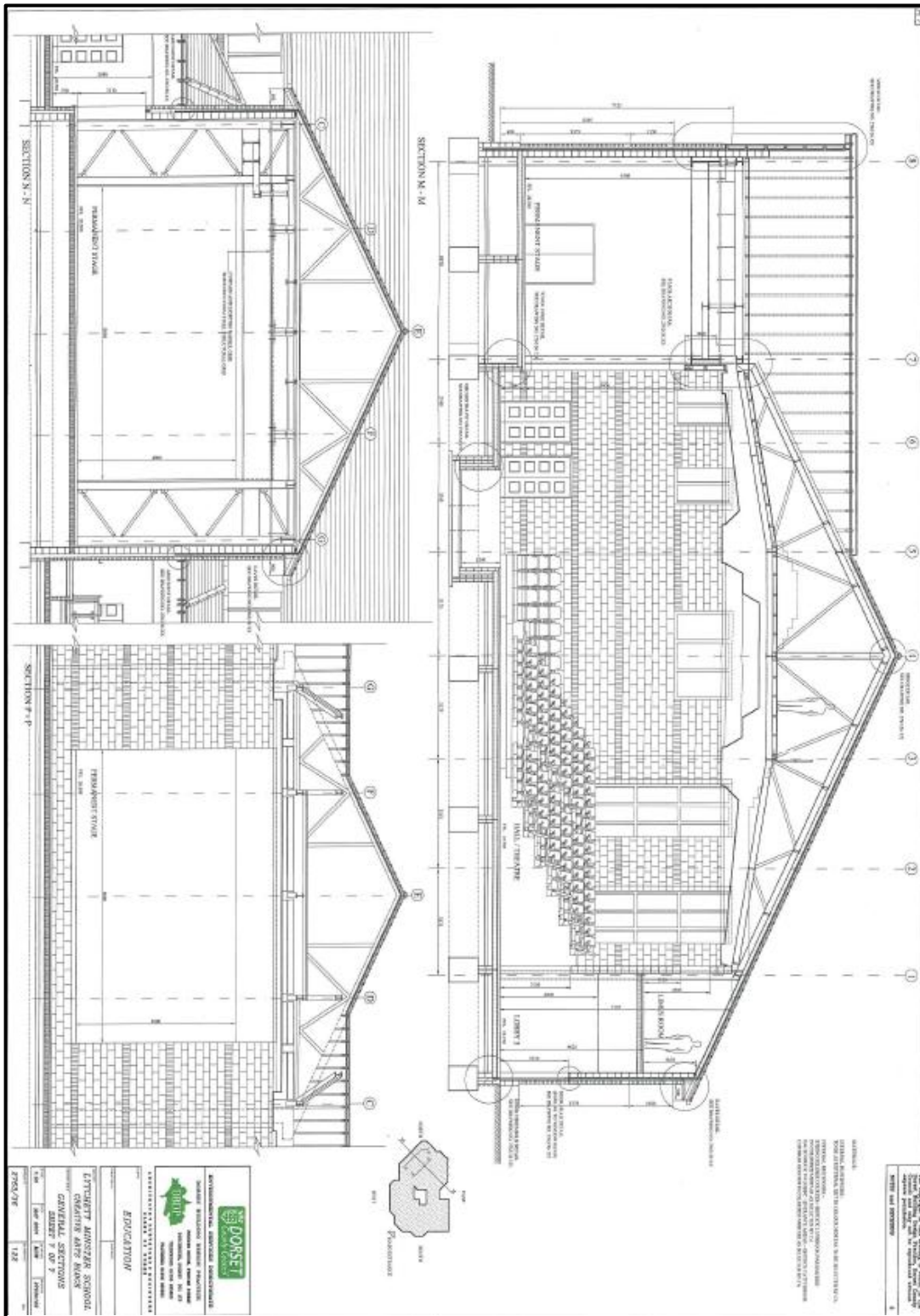
9.7 General Sections – identifying plant room roof height in relation to first floor Art Room roof



9.9 General Sections – identifying plant room roof space joining Theatre roof space



9.10 General Sections – Theatre roof space and Hall



10 Photographs

List of Images

Image No.	Description
01	Aerial view of 2 nd floor plant room and surrounding area.
02	Area located as initial point of lightning strike – 2 nd floor plant rooms.
03	Image showing damage to compartment walls - 2 nd floor plant rooms.
04	Image showing access door leading to the roof area above the 1 st floor art room 1 and art room 2 from the 2 nd floor plant room.
05	Access door leading from the roof area above the 1 st floor art room 3 and art room 4 from the 2 nd floor plant room.
06	Image showing the 2 nd floor plant room and adjoining area housing the air conditioning units and voids are connecting with the Theatre.
07	Image showing fire and heat damage to the structural steel beams in the 2 nd floor plant room and adjoining compartment housing the air conditioning units and voids.
08	Image showing a lightning conductor situated above the main entrance lobby roof approximately six metres from the 2 nd floor plant room.
09	Image showing fire spread along the roof of the main entrance lobby towards the lightning conductor identified in image 08.
010	Image showing a lightning conductor from the 2 nd floor plant room in to the courtyard of these premises.
011	Image showing a lightning conductor from the 2 nd floor plant room terminating in the courtyard of these premises.
012	Image showing external view of the premises Theatre.
013	Image showing internal view of the premises Theatre.
014	Image showing the large air conditioning vent originating from the 2 nd floor plant room in to the Theatre

- 015 Image showing internal view of the open plan Theatre and stage leading to the Dance Studio
- 016 Image showing fire doors leading from the Theatre to the ground floor corridor one.
- 017 Image showing the heat and fire damage in the stage area leading to the Dance Studio.
- 018 Image identifying the Dance Studio and contents, including air conditioning units, severely damaged by fire and heat.
- 019 Image identifying the Dance Studio roof structure and contents severely damaged by fire and heat.
- 020 Image showing fire doors leading to the first floor art rooms via the main entrance lobby staircase. Fire doors and surrounding glass fitted with intumescent glazing.
- 021 Image showing rear staircase B leading to the first floor art rooms.
- 022 Image showing a view of the 1st floor corridor 4
- 023 Image of first floor fire doors (identified in image 020) viewed from corridor 4.
- 024 Image showing a view of the 1st floor corridor 3
- 025 Image showing fire damage to the first floor art room 1
- 026 Image showing fire damage to the first floor art room 2
- 027 Image of 2nd floor plant room from the 1st floor corridor 4
- 028 Image showing fire damage in 1st floor art room 3
- 029 Image showing fire damage in 1st floor art room 4
- 030 Image of 2nd floor plant room taken from corridor 3.
- 031 Image showing a lightning conductor leading from the 2nd floor plant room towards the adjacent air conditioning unit area.
- 032 Image showing close up of image 031
- 033 Image showing close up of image 031
- 034 Image showing fire resistance of fire doors on the ground floor and limited fire damage to the ground floor Drama Studio
- 035 Image showing ground floor music room 2 not affected by fire

Image 001



Image 002



Image 03



Image 04



Image 05



Image 06



Image 07



Image 08



Image 09



Image 10



Image 11



Image 12



Image 13



Image 14



Image 15



Image 16



Image 17



Image 18



Image 19



Image 20



Image 21



Image 22



Image 23



Image 24



Image 25



Image 26



Image 27



Image 28



Image 29



Image 30



Image 31



Image 32



Image 33



Image 34

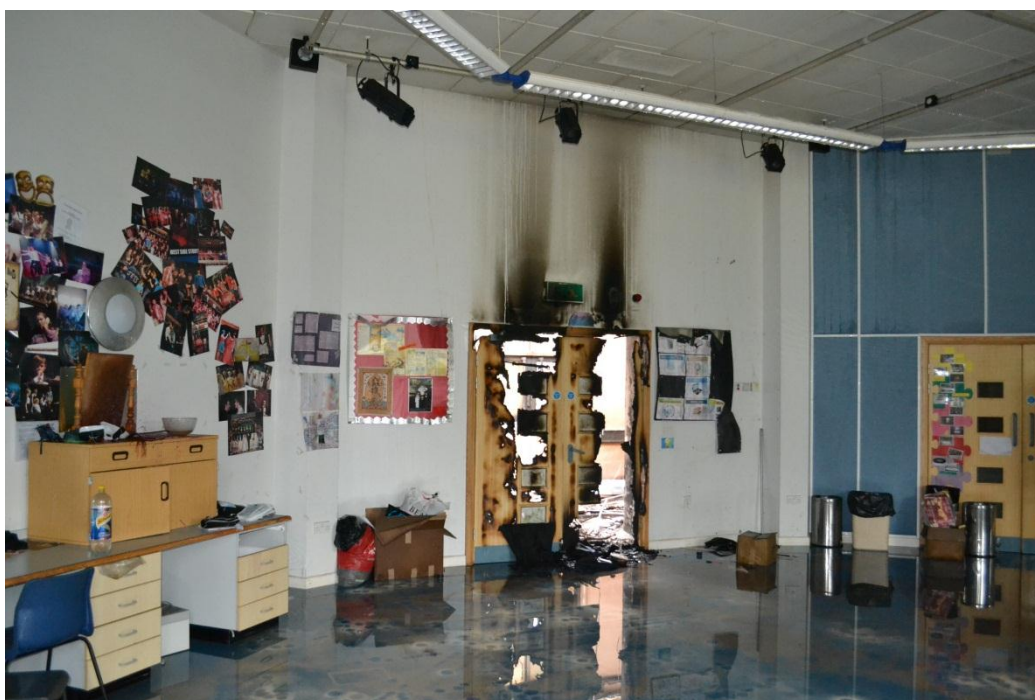


Image 35



11 Incident Recording System

Incident Recording Form For Incident Number - 012211

Incident ID | Resources | Incident Details | Fire Details | Primary Fire | Buildings/Ships | Extinction | Haz Mat | Cause/Damage | Additional Details

INCIDENT INFORMATION (All Incidents)		Help
1.1	FRS Incident Number:	012211-27122012
1.2	Date of Incident:	27/12/2012 16
1.3	Fire & Rescue Service:	FR Dorset
1.4	Station:	Hamworthy
1.5	First Call to FRS:	27/12/2012 07:06:29
1.6	Under Control:	27/12/2012 12:10:15
1.7	Closed Time:	02/01/2013 11:23:05
1.8	Origin of Call:	FR Person (mobile)
1.9	Did this incident occur at an addressable location:	<input checked="" type="radio"/> Yes <input type="radio"/> No
	Address:	LYTCHETT MINSTER UPPER SCHOOL POST GREEN ROAD, LYTCHETT MINSTER
1.16	Postcode:	FR BH16 6JD
1.17	Grid Ref E:	FR 395956
1.18	Grid Ref N:	FR 93503
1.19	Was the incident an 'over the border incident':	<input type="radio"/> Yes <input checked="" type="radio"/> No
1.22	Initial incident type:	Building
	Revised Incident Type:	PF - PROPERTY FIRE
1.23	Is this a Fire/Special Service/False Alarm?:	<input type="radio"/> Special Service <input type="radio"/> False Alarm <input checked="" type="radio"/> Fire
1.24	Officer in Charge:	FR WM Cooper

Next

Incident Recording Form For Incident Number - 012211

Incident ID | Resources | Incident Details | Fire Details | Primary Fire | Buildings/Ships | Extinction | Haz Mat | Cause/Damage | Additional Details

DFRS RESOURCES USED (All Incidents)		Help
2.1	Number of Pumps:	27
2.2	Number of Other Vehicles:	24
2.3	Number of Flexi Duty Officers:	16
2.4	Was any equipment used at the incident:	<input checked="" type="radio"/> Yes <input type="radio"/> No
		Add Item

Type	No Used
Breathing Apparatus-CABA - standard duration	6
Water Delivery-Hosereel - high pressure	3
Water Delivery-Main line/jet	8
Water Delivery-Monitor - high pressure	1

Back **Next**

Incident Recording Form For Incident Number - 012211

Incident ID | Resources | Incident Details | Fire Details | Primary Fire | Buildings/Ships | Extinction | Haz Mat | Cause/Damage | Additional Details

INCIDENT DETAILS (All Incidents)		Help
3.1	Were there any Injuries/Fatalities/Rescues/Extractions:	<input type="radio"/> Yes <input checked="" type="radio"/> No
3.2	Were there any evacuations at this incident with or without FRS assistance:	<input type="radio"/> Yes <input checked="" type="radio"/> No
3.3	Type of property:	FR Non Residential-Education-secondary school
3.5	Was there an attack on FRS personnel at the incident (verbal or physical):	<input type="radio"/> Yes <input checked="" type="radio"/> No

Back **Next**

Incident Recording Form For Incident Number - 012211

Incident ID | Resources | Incident Details | Fire Details | Primary Fire | Buildings/Ships | Extinction | Haz Mat | Cause/Damage | Additional Details

FIRE DETAILS (All Fire Incidents)		Help
6.1	Was the property/Vehicle derelict:	<input type="radio"/> Yes <input checked="" type="radio"/> No
6.2	Was the fire confined to a chimney:	<input type="radio"/> Yes <input checked="" type="radio"/> No
6.3	Were there 5 or more pumps at the incident:	<input checked="" type="radio"/> Yes <input type="radio"/> No
6.4	Was this a late fire call:	<input checked="" type="radio"/> Yes <input type="radio"/> No

[Back](#) [Next](#)

Incident Recording Form For Incident Number - 012211

Incident ID | Resources | Incident Details | Fire Details | Primary Fire | Buildings/Ships | Extinction | Haz Mat | Cause/Damage | Additional Details

PRIMARY FIRE DETAILS (Primary Fire Incidents)		Help
7.5	Multi-seated fire:	<input type="radio"/> Yes <input checked="" type="radio"/> No
7.6	Time from ignition to discovery:	<input type="text" value="Over 30 minutes and up to 2 hours"/>
7.7	Time from discovery to first call:	<input type="text" value="5 to 30 minutes"/>
7.8	Discovered by:	<input type="text" value="Person"/>
7.9	Place where fire started:	<input type="text" value="Non Residential Building-Roof space"/>
7.10	Was there a smoke alarm in the premises affected by fire:	<input checked="" type="radio"/> Yes <input type="radio"/> No <input type="radio"/> Don't Know

[Add Alarm](#)

Type
Mains security system including smoke alarm

[Back](#) [Next](#)

Incident Recording Form For Incident Number - 012211

Incident ID | Resources | Incident Details | Fire Details | Primary Fire | Buildings/Ships | Extinction | Haz Mat | Cause/Damage | Additional Details

FIRES IN BUILDING & SHIPS (Primary Fire Incidents)		Help
8.1	Any special method of building construction:	<input type="text" value="None"/>
8.2	Do fire safety regulations apply (If the fire was in a non domestic property or a common/shared area of a domestic property then select yes):	<input checked="" type="radio"/> Yes <input type="radio"/> No
8.3	Means of escape:	<input type="text" value="OK - no visible concerns"/>
8.4	Compartmentation:	<input type="text" value="Fire spread through gaps or voids in construction"/>
8.6	Was there anybody in the building at the time of the fire:	<input type="radio"/> Yes <input checked="" type="radio"/> No <input type="radio"/> Don't Know
8.7	Is the building normally occupied:	<input type="text" value="Not known"/>
8.8	Number of floors above ground:	<input type="text" value="2"/>
8.9	Number of floors below ground:	<input type="text" value="0"/>
8.10	Number of floor deck of Origin (Ground = 0):	<input type="text" value="2"/>
8.11	What is the approx size of the room/compartment of the fires origin (sq.m):	<input type="text" value="51 to 100"/>
8.12	What is the approx size of the floor of the fires origin (sq.m):	<input type="text" value="51 to 100"/>
8.13	Was the roof of the building made of thatch:	<input type="radio"/> Yes <input checked="" type="radio"/> No

[Back](#) [Next](#)

Incident Recording Form For Incident Number - 012211

Incident ID | Resources | Incident Details | Fire Details | Primary Fire | Buildings/Ships | Extinction | Haz Mat | Cause/Damage | Additional Details

EXTINCTION OF PRIMARY FIRES (Primary Fire Incidents)		Help
10.1	Was there a delay in starting fire fighting action:	<input type="text" value="Delay due to: Accessing fire - due to building type e.g. high rise building"/>
10.2	Method of fire fighting before arrival of FRS:	<input type="text" value="None"/>
10.3	Method of fire fighting by FRS up to stop:	<input type="text" value="Other sources-Monitors (MON) _ ground or aerial (if using foam use 'Foam' categories)"/>
10.4	Were there any manual fire fighting systems used by the Service:	<input type="radio"/> Yes <input checked="" type="radio"/> No <input type="radio"/> Don't Know
10.7	Were there any building fire fighting facilities present:	<input type="radio"/> Yes <input checked="" type="radio"/> No <input type="radio"/> Don't Know
10.11	Were there any Fixed Installation systems present:	<input type="radio"/> Yes <input checked="" type="radio"/> No <input type="radio"/> Don't Know

[Back](#) [Next](#)

Incident Recording Form For Incident Number - 012211

Incident ID | Resources | Incident Details | Fire Details | Primary Fire | Buildings/Ships | Extinction | Haz Mat | Cause/Damage | Additional Details

HAZARDOUS MATERIALS (All Fires and Special Services)		Help
11.1	Were there any hazardous materials involved:	<input type="radio"/> Yes <input checked="" type="radio"/> No <input type="radio"/> Don't Know

[Back](#) [Next](#)

Incident Recording Form For Incident Number - 012211

Incident ID | Resources | Incident Details | Fire Details | Primary Fire | Buildings/Ships | Extinction | Haz Mat | Cause/Damage | Additional Details

SUPPOSED CAUSE, DAMAGE AND OTHER FIRE DETAILS (All Incidents)		Help
13.1	Most Likely Motive:	<input type="text" value="Accidental"/>
13.2	Most Likely cause:	<input type="text" value="Accidental-Natural occurrence"/>
13.3	Caused by:	<input type="text" value="Other"/>
	Other Detail:	<input type="text" value="Lightning Strike"/>
13.4	Human factors contributing to fire:	<input type="text" value="Not known"/>
13.5	Was impairment due to suspected drugs/alcohol a contributory factor in fire:	<input type="text" value="No"/>
13.8	Source of ignition:	<input type="text" value="Other-Other"/>
13.9	Powered by:	<input type="text" value="Other"/>
	Other Detail:	<input type="text" value="Lightning Strike"/>
13.11	Material or item first ignited:	<input type="text" value="Structural/Fixtures/Fittings _ External-Roof"/>
13.12	Material or item most responsible for the development of fire:	<input type="text" value="Structural/Fixtures/Fittings _ External-Roof"/>
13.13	Abnormal rapid fire development:	<input type="text" value="No rapid fire growth"/>
13.14	Dangerous substances affecting fire fighting or development of fire:	<input type="text" value="None"/>
13.15	Was there an explosion:	<input type="radio"/> Yes <input checked="" type="radio"/> No <input type="radio"/> Don't Know
13.19	Was there heat and smoke damage only (no fire damage):	<input type="radio"/> Yes <input checked="" type="radio"/> No
13.20	Estimated size of fire when FRS arrived:	<input type="text" value="Buildings-Roof space and other floors(s)"/>
13.21	What was the extent of the fire and heat damage at stop:	<input type="text" value="Buildings-Roof space and other floors(s)"/>
13.22	What is the extent of the area that is fire damaged (sq.m) at stop:	<input type="text" value="501 to 1000"/>
13.23	Was the door to the room of origin closed:	<input type="radio"/> Yes <input type="radio"/> No <input checked="" type="radio"/> Don't Know
13.24	If any adjacent properties were affected at the time FRS arrived, how far away were they (m):	<input type="text" value="No other property affected"/>
13.25	If any adjacent properties were affected at stop, how far away were they (m):	<input type="text" value="No other property affected"/>
13.26	What is the extent of the total area damaged (sq.m at stop, including fire, water, heat and smoke damage):	<input type="text" value="501 to 1000"/>

[Back](#) [Next](#)

Incident Recording Form For Incident Number - 012211

[Incident ID](#) | [Resources](#) | [Incident Details](#) | [Fire Details](#) | [Primary Fire](#) | [Buildings/Ships](#) | [Exinction](#) | [Haz Mat](#) | [Cause/Damage](#) | [Additional Details](#)

ADDITIONAL DETAILS		Help
14.1	Fire investigation to be carried out:	<input checked="" type="radio"/> Yes <input type="radio"/> No
	Investigation carried out by:	<input type="text" value=""/>
14.3	Quickstrike req:	<input type="radio"/> Yes <input checked="" type="radio"/> No <input type="radio"/> Completed
	Please provide details of why no Quickstrike was required:	<input type="text" value="Not suitable at this location"/>
14.5	Do you want to complete a DFRS 446 for this incident:	<input type="radio"/> Yes <input checked="" type="radio"/> No
14.7	Form Completed By: (change if incorrect):	<input type="text" value="WM Cooper"/>
Further Details: (Please use the space below to add any further details or comments on the incident as you see fit)		
<input type="text" value=""/>		

[Back](#)

12

Incident log 01211

27/12/2012

08/01/2013 23:54:01 by BRONZE-2714

Incident Log - 012211

Incident	012211	Taken by	FJ	at	27/12/2012 07:07:52	Risk	D	Stn	17	Status	C
----------	--------	----------	----	----	---------------------	------	---	-----	----	--------	---

Call	07:06:29	Address	07:07:32	Created	07:07:52
Assigned	07:08:29	Alerted	07:08:34		
Mobile	07:09:50	On Scene	07:23:05	Stop	12:10:15

Original Type	PF - PROPERTY FIRE
Revised Type	PF - PROPERTY FIRE
Incident Tags	FI Completed
	FIT Attendance
	Press
	SOMO

Caller	*****	Call Source	999
Address	LYTCHETT MINSTER SCHOOL,POST GREEN ROAD,LYTCHETT MINSTER		

Summary	18P4 TO PROCEED AS NURSERY PUMP
---------	---------------------------------

Officer In Charge	Unknown
Stop Message	27/12/2012 12:10:15 from 17C2

Appliances									
Csign	Stn	OIC	Ri Assign	Alerted	Mobile	On Sc	Avail	Return	
18P2	18	WM WILKINSON	4	07:08:29	07:09:50	07:23:05	14:24:03	14:37:59	
18P4	18	WM CRABB	4	07:08:29	07:08:34	07:17:21	07:31:27	13:31:59	13:46:38
N902	18	FF VASS	1	07:08:29	07:08:34	07:23:08	07:31:27	13:27:36	13:38:15
15P1	15	WM JAMES	5	07:22:41	07:22:46	07:30:11	08:28:32	12:43:44	12:55:19
19P1	19	TWM TUCKER	4	07:22:41	07:22:46	07:31:30	07:41:24	13:48:43	14:05:59
14P1	14	WM STIRLING	5	07:22:41	07:22:46	07:30:46	07:40:31	14:27:28	14:41:04
07A1	07	FF EVANS	2	07:22:41	07:22:46	07:33:23	08:06:56	22:51:31	23:55:33
19P2	13	CM HOYLE	4	07:25:45	07:26:22	07:34:43	12:50:38	13:12:57	
21P1	21	CM WELTON	5	07:29:12	07:29:40	07:47:26	14:01:57	14:27:50	

13P7	13	WM GARBUTT	4	07:29:12	07:29:17	07:31:10	07:47:39	12:51:09	13:25:56
16P1	16	WM BURRIDGE	4	07:29:12		07:29:57	07:53:06	12:31:52	13:08:57
25P1	25	WM HOCKADAY	6	07:29:12	07:29:17	07:32:28	07:57:19	13:45:45	14:37:01
16P4	16	WM CORBEN	4	07:32:07	07:32:11	07:57:05	08:20:22	13:54:16	13:54:16
05S1	05	ACM MOORE	2	07:35:07	07:35:11	07:45:22	08:26:34	12:38:29	14:16:17
N903	26	FF BIRKINS	2	08:01:14	08:01:18	08:32:16			09:00:29
26T2	26		0	08:02:06	08:02:10			08:04:06	08:04:06
N980	26		0	08:02:06	08:02:10			08:04:06	08:04:06
17C2	24	WM TICEHURST	4	08:02:20		08:02:49	08:20:06	14:29:52	14:35:37
YEO8	SYEO	FF BOLTON	2	08:09:03		08:24:09	09:08:23	13:27:19	14:29:00
YEO2	SYEO	ACC SHORTLAND	5	08:12:47		08:19:14	09:09:26	13:26:42	14:38:00
YEO9W	10	FF BOLTON	2	08:26:46		08:26:52	09:08:40	13:45:23	14:42:00
18R2	18	FULL CREWS	0	08:33:54		08:33:59	08:40:03	11:46:44	11:46:44
18R3	18	FULL CREWS	4	08:33:54		08:33:59	08:40:03	10:08:11	10:19:23
FOR9W	HFOR	FF CLARK	2	08:41:45		08:51:08	09:21:40	17:11:19	18:04:27
15P9	15	CM NICOL	2	08:46:26	08:46:30	08:57:27	09:11:41	15:38:18	16:03:03
21S4	10	FF BARRETT	1	08:53:10		08:53:16	09:52:14	18:31:32	18:53:29
03T9	03	ACM BEAZER	2	08:54:28	08:54:32	09:16:10	10:39:05	18:19:51	19:17:48
N901	03	ACM BEAZER	2	08:54:28	08:54:32	09:16:10	10:39:05	18:19:51	19:17:48
VG019	SHQ	GM CREEGAN	1	08:58:56		08:59:11	09:31:36	13:23:46	16:31:43
N903	26		0	09:01:19			09:01:26	09:31:13	09:31:13
26T3	26		0	09:01:19			09:01:26	09:31:13	09:31:13
WIL9W	WWIL	FF GILBERT	2	10:39:16	10:40:53	10:45:00	11:18:40	17:19:09	18:49:20
26T3	17		0	10:41:52			10:41:55	16:38:03	17:31:25
N903	17		0	10:41:52			10:41:55	16:38:03	17:31:25
FDU2	08	WORKSHOP CREW	0	10:41:57		11:15:26	12:22:23	22:39:25	22:39:25
05P1	23	WM ELLIOTT	5	12:33:42		12:34:38	13:28:10	19:49:56	20:37:45
07P1	18	CM OSHEA	5	12:34:10		12:35:27	12:56:18	16:58:11	17:31:37
12P1	12	WM VINING	5	12:42:50	12:42:54	12:49:18	13:26:12	16:47:57	17:29:29
23A1	23	FF REED	2	12:46:14	12:46:15	12:47:35	13:13:49		17:48:53
03P4	07	WM TUCK	5	13:05:54	13:05:55	13:06:00	14:09:00	18:06:54	19:00:17
03P1	15	CM NORTHOVER	4	13:06:22	13:06:23	13:10:03	13:22:42	18:09:50	19:16:39
13P1	13		5	13:37:15				13:37:16	13:37:16
13P1	13	CM PLUMLEY	5	13:37:39		13:37:47	14:01:01	18:46:14	19:27:35
16P4	16	WM CORBEN	4	13:55:22			13:55:34	14:03:28	14:39:57
18T9	18	CM COLE	2	14:00:14		14:00:24	14:07:11	18:59:56	19:07:27
N902	18	CM COLE	2	14:00:14		14:00:24	14:07:11	18:59:56	19:07:27
26T3	26	CM MACFARLANE	2	17:53:33		17:53:37	18:27:45	19:45:27	20:33:06
N903	26	CM MACFARLANE	2	17:53:33		17:53:37	18:27:45	19:45:27	20:33:06
18P1	18	CM CHAVE	4	18:59:49		19:00:06	19:14:08	22:53:21	23:04:46
18P1	18	CM CHAVE	5	07:00:28		07:00:39	07:10:36	07:33:25	07:44:21
23A1	23	CM WINBORN	2	08:10:02		08:10:10	08:38:23	11:46:06	12:21:19
18P1	18	CM COLCLOUGH	1	08:38:48		08:38:56	08:45:54	11:47:00	12:19:38
18P4	18	CM COLE	4	09:57:43	09:57:47	10:12:01	10:24:08	11:50:50	11:58:30

18P2	18	CM COLCLOUGH	5 13:56:36	13:56:40 14:04:56 15:00:35 15:12:25
18P1	18	CM BELLINGHAM	5 10:49:55	10:50:00 11:00:58 12:50:49 13:02:08
18P2	18	CM WICKHAM	4 10:50:44	10:50:50 11:03:00 12:50:52 13:01:23

Callsign	Activation	Response	At Scene	Committed
18P2	00:01:58	00:15:13	07:00:58	
18P4	00:09:29	00:23:35	06:00:32	06:23:25
N902	00:15:16	00:23:35	05:56:09	06:19:02
15P1	00:22:19	01:20:40	04:15:12	05:20:58
19P1	00:23:38	00:33:32	06:07:19	06:25:57
14P1	00:22:54	00:32:39	06:46:57	07:04:42
07A1	00:25:31	00:59:04	14:44:35	15:28:45
19P2	00:18:30	00:26:51	05:15:55	
21P1	00:21:48	00:39:34	06:14:31	
13P7	00:23:18	00:39:47	05:03:30	05:21:52
16P1	00:22:05	00:45:14	04:38:46	
25P1	00:24:36	00:49:27	05:48:26	06:16:28
16P4	00:49:13	01:12:30	05:33:54	06:22:05
05S1	00:37:30	01:18:42	04:11:55	05:03:18
N903	01:24:24			
26T2				00:01:56
N980				00:01:56
17C2	00:54:57	01:12:14	06:09:46	
YEO8	01:16:17	02:00:31	04:18:56	
YEO2	01:11:22	02:01:34	04:17:16	
YEO9W	01:19:00	02:00:48	04:36:43	
18R2	01:26:07	01:32:11	03:06:41	
18R3	01:26:07	01:32:11	01:28:08	
FOR9W	01:43:16	02:13:48	07:49:39	
15P9	01:49:35	02:03:49	06:26:37	06:51:48
21S4	01:45:24	02:44:22	08:39:18	
03T9	02:08:18	03:31:13	07:40:46	09:25:19
N901	02:08:18	03:31:13	07:40:46	09:25:19
VG019	01:51:19	02:23:44	03:52:10	
N903		01:53:34	00:29:47	
26T3		01:53:34	00:29:47	
WIL9W	03:37:08	04:10:48	06:00:29	06:38:16
26T3		03:34:03	05:56:08	
N903		03:34:03	05:56:08	
FDU2	04:07:34	05:14:31	10:17:02	
05P1	05:26:46	06:20:18	06:21:46	
07P1	05:27:35	05:48:26	04:01:53	
12P1	05:41:26	06:18:20	03:21:45	04:05:03
23A1	05:39:43	06:05:57		

03P4	05:58:08	07:01:08	03:57:54	05:00:59
03P1	06:02:11	06:14:50	04:47:08	05:03:27
13P1				
13P1	06:29:55	06:53:09	04:45:13	
16P4		06:47:42	00:07:54	
18T9	06:52:32	06:59:19	04:52:45	
N902	06:52:32	06:59:19	04:52:45	
26T3	10:45:45	11:19:53	01:17:42	
N903	10:45:45	11:19:53	01:17:42	
18P1	11:52:14	12:06:16	03:39:13	
18P1	23:52:47	24:02:44	00:22:49	
23A1	25:02:18	25:30:31	03:07:43	
18P1	25:31:04	25:38:02	03:01:06	
18P4	27:04:09	27:16:16	01:26:42	01:53:03
18P2	30:48:48	30:57:04	00:55:39	
18P1	99:42:08	99:53:06	01:49:51	
18P2	99:42:58	99:55:08	01:47:52	

Officers							
Csign	Name	Assign	Alerted	Mobile	On Sc	Avail	Return
S16	GRAHAM	07:28:31	07:28:36	07:29:00	07:40:21	14:36:46	14:36:46
B4	ANSELL	07:30:29		07:43:55	07:49:46	15:08:02	15:18:53
S13	FRAMPTON	07:33:38		07:34:01	07:53:05	16:27:06	16:27:06
G2	SPRING	07:41:57		07:55:30	08:02:52	14:54:02	14:54:02
S20	ARUNDEL	08:01:28		08:04:48	08:17:59	15:48:24	16:00:06
G4	LEGG	08:45:00		08:45:07	08:57:46	09:12:04	09:12:04
S26	ROGERS	09:08:50	09:08:56	09:09:39	09:39:57		13:16:36
O2	Longman	09:12:37		09:12:46		19:50:35	19:50:35
S9	BROWN	10:37:45	10:39:13	10:39:45	11:15:28	13:40:22	13:40:22
S24	CREIGHTON	10:47:44	10:47:50	10:49:53	10:58:35	14:56:27	14:56:27
S7	NAIRN	13:28:17		13:28:23	14:02:52	21:31:54	21:31:54
S26	ROGERS	14:15:20			14:15:31		16:35:39
B4	ANSELL	09:04:12			09:04:24	12:05:20	12:15:52
S10	JENESON	14:28:42	14:28:47	14:28:55	14:28:59	15:48:27	15:48:27
S10	JENESON	12:21:09	12:21:14		12:21:15	13:31:25	13:31:25
S24	CREIGHTON	12:21:09			12:21:15	13:29:18	13:29:18

Callsign	Activation	Response	At Scene	Committed
S16	00:21:08	00:32:29	06:56:25	07:08:15
B4	00:36:03	00:41:54	07:18:16	07:37:33
S13	00:26:09	00:45:13	08:34:01	08:53:28
G2	00:47:38	00:55:00	06:51:10	07:12:05
S20	00:56:56	01:10:07	07:30:25	07:46:56
G4	01:37:15	01:49:54	00:14:18	00:27:04

S26	02:01:47	02:32:05		
O2	02:04:54			10:37:58
S9	03:31:53	04:07:36	02:24:54	03:02:37
S24	03:42:01	03:50:43	03:57:52	04:08:43
S7	06:20:31	06:55:00	07:29:02	08:03:37
S26		07:07:39		
B4		25:56:32	03:00:56	03:01:08
S10	31:21:03	31:21:07	01:19:28	01:19:45
S10		101:13:23	01:10:10	01:10:16
S24		101:13:23	01:08:03	01:08:09

Recommended Resources		
Callsign	Estimated Response Time	Status
18P2	7.9	MS
18P4	11.4	HS
15P1	15.1	HS
19P1	17.2	HS
07A1	49.3	HA
YEO8	66.5	BW
N902	11.4	HA
N903	31.7	HA

Narrative			
Time	Op	Csign	Message
			27/12/2012
07:06:29	****		Call answered
07:06:29	****		Call Collection New Incident key pressed
07:06:30	****		Call ringing
07:06:31	****		Call Collection Eisec Returned Redacted information
07:06:56	****		Call Collection Gazetteer search ended LYTCHETT MINSTER SCHOOL,,,,,,
07:06:56	****		Call Collection Gazetteer searched (phonetically) LYTCHETT MINSTER SCHOOL,,,,,,
07:06:57	****		Call Collection Gazetteer search ended LYTCHETT MINSTER SCHOOL
07:06:57	****		Call Collection Gazetteer searched LYTCHETT MINSTER SCHOOL,,,,,,

07:07:00	****	Call Collection Gazetteer search ended LYTCHETT MINSTER SCHOOL,,,,,,
07:07:00	****	Call Collection Gazetteer searched (phonetically) LYTCHETT MINSTER SCHOOL,,,,,,
07:07:24	****	Call Collection Gazetteer searched ,,POST GREEN ROAD,,,,,
07:07:25	****	Call Collection Gazetteer search ended ,,POST GREEN ROAD,,,,,
07:07:32	****	Call Collection Address selected (replace) , LYTCHETT MINSTER SCHOOL, POST GREEN ROAD, , LYTCHETT MINSTER, HAMWORTHY, BH166JD
07:07:52	****	Call Collection Incident created
07:07:52	****	Call Collection Position ID: CRFX03
07:07:52	****	Call Collection Map Ref: M100C1 (I78B2)
07:07:53	****	Action Action Plan PF - Property Fires Activated
07:08:29	****	Mobilisation
07:08:29	****	Mobilisation FJ Turnout to 012211-27122012
07:08:29	**** 18P2	Status changed from MS - Mobile Stby to AS - Assign
07:08:29	****	
07:08:29	**** N902	Assigned to incident 012211-27122012
07:08:29	**** 18P4	Assigned to incident 012211-27122012
07:08:29	**** 18P2	Assigned to incident 012211-27122012
07:08:29	**** 18P2	Clear from incident 012209-27122012
07:08:29	****	
07:08:29	****	Mobilisation FJ Turnout 18P4,N902 (R,A); 18P2 (V) to 012211-27122012
07:08:29	**** N902	Role set to WRC
07:08:32	****	Call Collection Call Collection Completed
07:08:32	****	Call Collection(1) message recorded
07:08:34	****	Incident turnout to 18 for 18P4,N902

		completed [23694]
07:08:34	**** 18P4	Status changed from AS - Assign to 51 - Alerted Incident
07:08:34	**** N902	Status changed from AS - Assign to 51 - Alerted Incident
07:09:50	**** 18P2	Status changed from AS - Assign to MI - Mobile Incident
07:11:50	****	Action Bronze Commander to be informed of all 2 pump inci Completed SM GRAHAM PAGED
07:14:38	**** 18P2	Key ANY FURTHER INFO - CONTROL STATE DETAILS FROM CALLER - 18P2 ACK
07:14:45	****	Action Bronze Commander to be informed of all 2 pump inci Comment SM GRAHAM ACK PAGER - FIRST INFORMATIVE
07:17:21	**** 18P4	Status changed from 51 - Alerted Incident to MI - Mobile Incident
07:17:32	**** 18P4	Riders changed from 0 to 4
07:17:32	**** 18P4	Officer in charge changed from to WM CRABB
07:19:00	****	Key TRIED CALLING 18P4 TO CONFIRM MOBILE TO LYTCHETT MINSTER SCHOOL AS DID NOT SAY ON BOOKING MOBILE - NO RESPONSE FROM 18P4
07:22:18	****	Details changed from FLAMES THROUGH TREES - POSSIBLE SCHOOL ALIGHT to MAKE PUMPS 5 - FIRE ROOF OF MAIN BUILDING - ALP REQUIRED
07:22:27	****	Make Pump(s) 5 Requested
07:22:33	****	MAKE PUMPS 5 FIRE IN MAIN BUILDING ROOF SPACE OF SCHOOL ALP REQUIRED
07:22:41	**** 19P1	Assigned to incident 012211-27122012
07:22:41	**** 15P1	Assigned to incident 012211-27122012
07:22:41	**** 07A1	Status changed from HA - Home - A Alert to AS - Assign
07:22:41	**** 14P1	Status changed from HS - Home Station to AS - Assign
07:22:41	**** 19P1	Status changed from HS - Home Station to AS - Assign
07:22:41	**** 15P1	Status changed from HS - Home Station to AS - Assign
07:22:41	****	Make Pump(s) Completed

07:22:41	****		Mobilisation LW Turnout to 012211-27122012
07:22:41	****	14P1	Assigned to incident 012211-27122012
07:22:41	****	07A1	Role set to High Rise
07:22:41	****	07A1	Assigned to incident 012211-27122012
07:22:46	****	19P1	Status changed from AS - Assign to 51 - Alerted Incident
07:22:46	****	15P1	Status changed from AS - Assign to 51 - Alerted Incident
07:22:46	****	14P1	Status changed from AS - Assign to 51 - Alerted Incident
07:22:46	****	07A1	Status changed from AS - Assign to 51 - Alerted Incident
07:23:05	****	18P2	Current location changed from 18 to 17
07:23:05	****	18P2	Status changed from MI - Mobile Incident to IA - In Attendance
07:23:08	****	N902	Status changed from 51 - Alerted Incident to MI - Mobile Incident
07:23:11	****		CAROLYN LONGMAN AWARE
07:23:21	****	N902	Key MOBILE 1 MIN
07:23:21	****	N902	Officer in charge changed from WATER CARRIER to FF VASS
07:23:21	****	N902	Riders changed from 0 to 1
07:24:46	****		Action Bronze Commander to be informed of all 2 pump inci Comment SM GRAHAM PAGED TO PROCEED
07:24:47	****		012217-27122012 identified as a repeat of this incident
07:25:40	****		Details changed from MAKE PUMPS 5 - FIRE ROOF OF MAIN BUILDING - ALP REQUIRED to MAKE PUMPS 5 - FIRE ROOF OF MAIN BUILDING - ALP REQUIRED 19P2 AS AERIAL APPLIANCE SUPPORT
07:25:45	****		Mobilisation LW Turnout 19P2 (V) to 012211-27122012
07:25:45	****	19P2	Assigned to incident 012211-27122012
07:25:45	****	19P2	Status changed from MS - Mobile Stby to AS - Assign
07:25:45	****	19P2	Clear from incident 012213-27122012
07:26:02	****	18P2	Informative ONCOMING APPLIANCES TO PROCEED VIA THE ONE WAY SYSTEM FROM LYCHET MINSTER VILLAGE - CALLED 18P4 BUT NO RESPONSE

07:26:14	****		Action Inform Police If Life Threat/possible Crime/assist Completed INFORMED AND ATTENDING
07:26:22	****	19P2	Status changed from AS - Assign to MI - Mobile Incident
07:28:24	****		Details changed from MAKE PUMPS 5 - FIRE ROOF OF MAIN BUILDING - ALP REQUIRED 19P2 AS AERIAL APPLIANCE SUPPORT to MAKE PUMPS 10 - FIRE ROOF OF MAIN BUILDING - ALP REQUIRED 19P2 AS AERIAL APPLIANCE SUPPORT
07:28:25	****		Make Pump(s) 10 Requested
07:28:26	****		MAKE PUMPS 10
07:28:31	****	S16	Status changed from 88 - Home Address available - Tomto to AS - Assign
07:28:31	****		Mobilisation LW Turnout S16 (P , T) to 012211-27122012
07:28:31	****	S16	Assigned to incident 012211-27122012
07:29:00	****	S16	Status changed from AL - Alerted Incident to 82 - Mobile to Incident - Tomtom
07:29:12	****	25P1	Status changed from 53 - Alerted to standby to AS - Assign
07:29:12	****	25P1	Assigned to incident 012211-27122012
07:29:12	****	16P1	Assigned to incident 012211-27122012
07:29:12	****	13P7	Assigned to incident 012211-27122012
07:29:12	****	21P1	Assigned to incident 012211-27122012
07:29:12	****		Make Pump(s) Completed
07:29:12	****	21P1	Status changed from MS - Mobile Stby to AS - Assign
07:29:12	****		Mobilisation LW Turnout 13P7 (R); 25P1 (R); 21P1 , 16P1 (V) to 012211-27122012
07:29:12	****	13P7	Status changed from HS - Home Station to AS - Assign
07:29:12	****	16P1	Status changed from MS - Mobile Stby to AS - Assign
07:29:17	****	25P1	Status changed from AS - Assign to 51 - Alerted Incident
07:29:17	****	13P7	Status changed from AS - Assign to 51 - Alerted Incident
07:29:40	****	21P1	Status changed from AS - Assign to MI - Mobile Incident
07:29:57	****	16P1	Status changed from AS - Assign to MI - Mobile Incident
07:30:11	****	15P1	Status changed from 51 - Alerted Incident to

		MI - Mobile Incident
07:30:26	**** 15P1	Riders changed from 0 to 5
07:30:26	**** 15P1	Officer in charge changed from to WM JAMES
07:30:29	****	Mobilisation FJ
		Turnout B4 (T) to 012211-27122012
07:30:29	**** B4	Status changed from 88 - Home Address available - Tomto to AS - Assign
07:30:29	**** B4	Assigned to incident 012211-27122012
07:30:46	**** 14P1	Status changed from 51 - Alerted Incident to MI - Mobile Incident
07:30:57	**** 14P1	OBILE APPROX 2 MINS
07:30:57	**** 14P1	Riders changed from 0 to 5
07:30:57	**** 14P1	Officer in charge changed from to WM STIRLING
07:31:10	**** 13P7	Officer in charge changed from to WM GARBUTT
07:31:10	**** 13P7	Status changed from 51 - Alerted Incident to MI - Mobile Incident
07:31:10	**** 13P7	Riders changed from 0 to 4
07:31:18	****	Action Inform Duty Silver Commander If Bronze Commander P Completed BM ANSELL INFORMED AND PROCEEDING DUE TO GM LEGG AT MANOR ROAD
07:31:27	**** 18P4	Status changed from MI - Mobile Incident to IA - In Attendance
07:31:27	**** N902	Status changed from MI - Mobile Incident to IA - In Attendance
07:31:30	**** 19P1	Status changed from 51 - Alerted Incident to MI - Mobile Incident
07:31:43	****	Details changed from MAKE PUMPS 10 - FIRE ROOF OF MAIN BUILDING - ALP REQUIRED 19P2 AS AERIAL APPLIANCE SUPPORT to MAKE PUMPS 10 - FIRE ROOF OF MAIN BUILDING - 16P4 TO PROCEED AS AERIAL LADDER SUPPORT
07:31:53	**** 14P1	OBILE APPROX 2 MINS
07:32:07	**** 16P4	Status changed from HS - Home Station to AS - Assign
07:32:07	**** 16P4	Assigned to incident 012211-27122012
07:32:11	****	Incident turnout to 16 for 16P4 completed [23762]
07:32:28	**** 25P1	Status changed from 51 - Alerted Incident to MI - Mobile Incident

07:32:30	****	Incident turnout to B4 for B4 failed [23758]
07:32:39	**** 25P1	Riders changed from 0 to 6
07:32:39	**** 25P1	Officer in charge changed from to WM HOCKADAY
07:33:23	**** 07A1	Status changed from 51 - Alerted Incident to MI - Mobile Incident
07:33:29	**** 07A1	Officer in charge changed from to FF EVANS
07:33:29	**** 07A1	Riders changed from 0 to 2
07:33:38	**** S13	Status changed from 86 - In Attendance - Tomtom to AS - Assign
07:33:38	**** S13	Role changed from Fire Safety to Command Support
07:33:38	****	Mobilisation LW Turnout S13 (V) to 012211-27122012
07:34:01	**** S13	Status changed from AS - Assign to MI - Mobile Incident
07:34:43	**** 19P2	Current location changed from 13 to 17
07:34:43	**** 19P2	Status changed from MI - Mobile Incident to IA - In Attendance
07:35:00	****	Details changed from MAKE PUMPS 10 - FIRE ROOF OF MAIN BUILDING - 16P4 TO PROCEED AS AERIAL LADDER SUPPORT to MAKE PUMPS 10 - FIRE ROOF OF MAIN BUILDING - 16P4 TO PROCEED AS AERIAL LADDER SUPPORT 05S1 AS COMMAND SUPPORT OFFICER
07:35:07	****	Mobilisation LW Turnout 05S1 (A) to 012211-27122012
07:35:07	**** 05S1	Role set to BA Tenders
07:35:07	**** 05S1	Status changed from HA - Home - A Alert to AS - Assign
07:35:11	**** 05S1	Status changed from AS - Assign to 51 - Alerted Incident
07:40:21	**** S16	Status changed from 82 - Mobile to Incident - Tomtom to 86 - In Attendance - Tomtom
07:40:31	**** 14P1	Key CLOSING CONTACT POINT
07:40:31	**** 14P1	Status changed from MI - Mobile Incident to IA - In Attendance
07:40:32	****	Key FROM BM ANSELL - I WILL BE CONTACTING GM SPRING WHO IS COMING ON DUTY AS SILVER COMMANDER TO ATTEND LYT MINSTER TO TAKE OVER FROM ME. AUTHORISE RECALL TO DUTY OF OFFICERS - REQUEST YOU NOTIFY ME

		OF ANY INCIDENTS WE ARE NOT ABLE TO SEND OFFICERS TO. GM LEGG TO CONTINUE TO PROCEED TO MANOR ROAD
07:41:24	**** 19P1	Key CLOSING CONTROL POINT
07:41:24	**** 19P1	Status changed from MI - Mobile Incident to IA - In Attendance
07:41:57	****	Mobilisation FJ Turnout G2 (V) to 012211-27122012
07:41:57	**** G2	Status changed from OD - Off Duty to AS - Assign
07:43:10	**** 18P2	Informative FROM WM COOPER A 3 STOREY TRADITIONAL BUILDING USED AS THEATRE AND OTHER SCHOOL BUILDINGS APPROX 50M X 75M APPORXIMATELY 40% OF ROOF INVOLVED IN FIRE BEING EXT TWO 135 LADDERS 2 MAIN LINES AND WATER CARRIER INCIDENT SECTORISED
07:43:10	**** 18P2	Tactical OFFENSIVE
07:43:49	**** B4	Key MOBILE TO LYTCHETT MINSTER SCHOOL - GM SPRING WILL ALSO BE PROCEEDING AND NOTIFYING US BEFORE HE BOOKS MOBILE
07:43:55	**** B4	Status changed from AS - Assign to MI - Mobile Incident
07:45:22	**** 05S1	Status changed from 51 - Alerted Incident to MI - Mobile Incident
07:45:31	**** 05S1	Key MOBILE APPROX 2 MINS
07:45:31	**** 05S1	Officer in charge changed from BA TENDER to ACM MOORE
07:45:31	**** 05S1	Riders changed from 0 to 2
07:45:44	**** 05S1	Key MOBILE APPROX 2 MINS
07:47:26	**** 21P1	Status changed from MI - Mobile Incident to IA - In Attendance
07:47:39	**** 13P7	Status changed from MI - Mobile Incident to IA - In Attendance
07:49:46	**** B4	Status changed from MI - Mobile Incident to IA - In Attendance
07:53:05	**** S13	Status changed from MI - Mobile Incident to 86 - In Attendance - Tomtom
07:53:06	**** 16P1	Status changed from MI - Mobile Incident to

		IA - In Attendance
07:53:13	**** 16P1	Key
		CLOSING CONTACT POINT
07:55:30	**** G2	Status changed from AS - Assign to MI - Mobile Incident
07:56:12	****	Redacted information
07:56:17	****	Linked as parent of 012218-27122012
07:57:05	**** 16P4	Status changed from 51 - Alerted Incident to MI - Mobile Incident
07:57:10	**** 16P4	Riders changed from 0 to 4
07:57:10	**** 16P4	Officer in charge changed from to WM CORBEN
07:57:19	**** 25P1	Status changed from MI - Mobile Incident to IA - In Attendance
07:57:38	****	Linked as parent of 012224-27122012
07:57:55	****	Linked as parent of 012223-27122012
07:58:01	**** 14P1	Informative 14P1 NOW COMMAND SUPPORT FOR THIS INCIDENT
07:58:06	****	Linked as parent of 012221-27122012
07:59:28	****	CFO UPDATED
08:00:13	****	Make Water Carrier 2 Requested
08:00:14	****	MAKE WATER CARRIERS 2
08:01:14	**** N903	Status changed from HA - Home - A Alert to AS - Assign
08:01:14	****	Mobilisation LW Turnout N903 (A) to 012211-27122012
08:01:14	****	Mobilisation Required response not despatched 1/Water Carrier
08:01:14	****	Mobilisation Required response not despatched 1/Water Carrier
08:01:14	**** N903	Assigned to incident 012211-27122012
08:01:14	**** N903	Role set to Water Carrier
08:01:18	****	Incident turnout to 26 for N903 completed [23801]
08:01:28	**** S20	Status changed from HA - Home Address to AS - Assign
08:01:28	****	Mobilisation FJ Turnout S20 (T) to 012211-27122012
08:01:28	**** S20	Assigned to incident 012211-27122012
08:02:06	**** 26T2	Status changed from HA - Home - A Alert to AS - Assign

08:02:06	****	26T2	Assigned to incident 012211-27122012
08:02:06	****		Mobilisation LW
			Turnout 26T2 (A) to 012211-27122012
08:02:06	****	N980	Status changed from HA - Home - A Alert to AS - Assign
08:02:06	****	N980	Assigned to incident 012211-27122012
08:02:10	****	N980	Status changed from AS - Assign to 51 - Alerted Incident
08:02:10	****	26T2	Status changed from AS - Assign to 51 - Alerted Incident
08:02:10	****		Incident turnout to 26 for 26T2 completed [23808]
08:02:20	****	17C2	Status changed from IA - In Attendance to AS - Assign
08:02:20	****	17C2	Assigned to incident 012211-27122012
08:02:21	****		Mobilisation BJB
			Turnout 17C2 (V) to 012211-27122012
08:02:38	****	17C2	Key
			NOT REUQUIRED AT MANOR ROAD DO YOU WISH US TO PROCEED TO LYTCHETT MINSTER SCHOOL - CONTROL AFFIRMATIVE
08:02:49	****	17C2	Status changed from AS - Assign to MI - Mobile Incident
08:02:52	****	G2	Status changed from MI - Mobile Incident to IA - In Attendance
08:03:28	****		Incident turnout to S20 for S20 failed [23804]
08:03:54	****		012225-27122012 identified as a repeat of this incident
08:04:06	****	N980	Status changed from 51 - Alerted Incident to HS - Home Station
08:04:06	****	26T2	Status changed from 51 - Alerted Incident to HS - Home Station
08:04:22	****	14P1	Informative
			DO YOU HAVE ETA FOR ALP FROM WEYMOUTH - CONTROL ASKED 07A1 ON RADIO - 07A1 RESPONSE 5 MINS - 14P1 ACK
08:04:48	****	S20	Processing action status [Mobile to Incident - Tomtom] for status [82]
08:06:02	****		Key
			1 RETAINED STOOD DOWN AT 0805HRS
08:06:15	****		Details changed from MAKE PUMPS 10 - FIRE ROOF OF MAIN BUILDING - 16P4 TO PROCEED AS AERIAL LADDER SUPPORT 05S1 AS COMMAND SUPPORT OFFICER to

		MAKE PUMPS 10 - MAKE ALPS 2 - WATER CARRIERS 3
		05S1 AS COMMAND SUPPORT OFFICER
08:06:44	****	Make High Rise 2 Requested
08:06:54	****	Make Water Carrier 3 Requested
08:06:55	****	FROM ACO ANSELL MAKE ALP 2 WE REQUIRED ALP RELEASED FROM BOURNEMOUTH INCIDENT DUE TO PRIORITY OF THIS INCIDENT - MAKE WATER CARRIERS 3
08:06:56	**** 07A1	Status changed from MI - Mobile Incident to IA - In Attendance
08:08:02	****	Key GM LEGG ALP CANNOT BE RELEASED FROM THIS INCIDENT AT THIS MOMENT - THE TACTICS ARE TO KNOCK FIRE DOWN WITH ALP SO THAT WE CAN ENTER THE BUILDING
08:09:03	**** YEO8	Role set to High Rise
08:09:03	**** YEO8	Assigned to incident 012211-27122012
08:09:03	****	Make High Rise Completed
08:11:32	****	Key CONTROL NOTE 14P1 INFORMED OF MESSAGE FROM GM LEGG AND THAT WE WOULD BE MOBILISING AN ALP FROM YEOVIL
08:12:47	**** YEO2	Assigned to incident 012211-27122012
08:12:47	**** YEO2	Status changed from MH - Mobile Home to AS - Assign
08:12:47	****	Mobilisation FJ Turnout YEO2 (V) to 012211-27122012
08:17:52	**** 14P1	Informative IF YOU HAVE ANY FURTHER APPLIANCES COMING HERE - ENTER SCHOOL PREMISES VIA THE ORNAMENTAL GATES JUSTUP FROM ST PETERS FINGER PUBLIC HOUSE GOING AGAINST THE ONE WAY TRAFFIC SYSTEM - 15P1 CALLED BUT NO ANSWER - 16P4 ACK 05S1 ACK
08:17:59	**** S20	Processing action status [In Attendance - Tomtom] for status [86]
08:18:07	**** 14P1	Informative IF YOU HAVE ANY FURTHER APPLIANCES COMING HERE - ENTER SCHOOL PREMISES VIA THE ORNAMENTAL GATES JUSTUP FROM ST PETERS FINGER PUBLIC

		HOUSE GOING AGAINST THE ONE WAY TRAFFIC SYSTEM - 15P1 CALLED BUT NO ANSWER - 16P4 ACK 05S1 ACK
08:19:14	**** YEO2	Status changed from AS - Assign to MI - Mobile Incident
08:19:14	**** YEO2	Riders changed from 4 to 5
08:19:14	**** YEO2	Officer in charge changed from FF ROLO to ACC SHORTLAND
08:20:06	**** 17C2	Status changed from MI - Mobile Incident to IA - In Attendance
08:20:22	**** 16P4	Status changed from MI - Mobile Incident to IA - In Attendance
08:23:15	****	Key POOLE DAY CREW TOLD TO SEND 1 CREW IN TECH RESCUE VEHICLES TO MANOR ROAD, AND THE OTHER TO LYTCHETT MINSTER SCHOOL IN THE VAN
08:23:47	**** YEO2	Key CONTROL PASSED DIRECTION DETAILS PREVIOUSLY PASSED FROM INCIDENT - YEO2 ACK ASKED CAN YOU CONFIRM THIS ROAD IS CLOSED - CONTROL ANSWER NEGATIVE UNABLE TO CONFIRM THAT AT THIS TIME - YEO2 ACK
08:24:09	**** YEO8	Status changed from AS - Assign to MI - Mobile Incident
08:24:09	**** YEO8	Officer in charge changed from to FF BOLTON
08:24:09	**** YEO8	Riders changed from 0 to 2
08:25:47	**** YEO8	Key CONTROL PASSED DIRECTION DETAILS RECEIVED FROM INCIDENT - YEO8 ACK
08:26:34	**** 05S1	Status changed from MI - Mobile Incident to IA - In Attendance
08:26:41	****	012226-27122012 identified as a repeat of this incident
08:26:46	**** YEO9W	Status changed from MH - Mobile Home to AS - Assign
08:26:46	**** YEO9W	Assigned to incident 012211-27122012
08:26:52	**** YEO9W	Status changed from AS - Assign to MI - Mobile Incident
08:26:52	**** YEO9W	
08:28:16	**** 14P1	Informative FROM ACO ANSELL FIRE INVOLVING ROOF - ROOF FULLY INVOLVED IN FIRE ALP WORKING IN SECTOR ONE

08:28:16	****	14P1	Tactical OFFENSIVE
08:28:30	****	14P1	Key CONTROL ASKED IF 15P1 ARE IN ATTENDANCE - 14P1 REPLY AFFIRMATIVE
08:28:32	****	15P1	Status changed from MI - Mobile Incident to IA - In Attendance
08:29:08	****		AVAILABILITY OF ALP AND WRC CHECKED WITH NEIGHBOURING FRS - HAMPSHIRE HAVE FORDINGBRIDGE WRC AND REDBRIDGE (NEAR SOUTHAMPTON). WILTSHIRE HAVE SALISBURY ALP AND WILTON (NEAR SALISBURY) WRC AVAILABLE
08:29:42	****		Key CONTROL INFORMED 14P1 THAT GM CREAGAN FROM DEVON AND SOMERSET IS ATTENDING DUE TO NUMBER OF THEIR APPLIANCES THERE - 14P1 ACK
08:29:54	****		Key FROM DEVON AND SOMERSET - THEY ARE NOW SENDING THEIR OFFICER - GM CREEGAN TO THIS INCIDENT DUE TO THE NUMBER OF THEIR APPLIANCES IN ATTENDANCE
08:32:16	****	N903	Status changed from 51 - Alerted Incident to MI - Mobile Incident
08:32:34	****	N903	Riders changed from 0 to 2
08:32:34	****	N903	Officer in charge changed from to FF BIRKINS
08:33:54	****	18R3	Assigned to incident 012211-27122012
08:33:54	****	18R2	Status changed from HS - Home Station to AS - Assign
08:33:54	****	18R3	Role changed from Support Rescue Vehic to Animal Rescue
08:33:54	****	18R3	Status changed from HS - Home Station to AS - Assign
08:33:54	****	18R2	Assigned to incident 012211-27122012
08:33:59	****	18R3	Status changed from AS - Assign to MI - Mobile Incident
08:33:59	****	18R2	Status changed from AS - Assign to MI - Mobile Incident
08:36:53	****	17C2	Key NOW ON OPERATION OF COMMAND SUPPORT AT SCHOOL
08:37:39	****	14P1	Officer in charge changed from WM

		STIRLING to CM PLUMLEY
08:38:06	**** N902	Key HYDRANT IN USE BLANDFORD ROAD UPTON
08:39:24	****	Agency Water Informed
08:40:03	**** 18R2	Status changed from MI - Mobile Incident to IA - In Attendance
08:40:03	**** 18R3	Status changed from MI - Mobile Incident to IA - In Attendance
08:41:45	**** FOR9W	Role set to Water Carrier
08:41:45	**** FOR9W	Assigned to incident 012211-27122012
08:41:45	**** FOR9W	Status changed from BR - Home OTB Ret to AS - Assign
08:41:45	****	Make Water Carrier Completed
08:43:16	****	Make Water Carrier 4 Requested
08:43:17	****	FROM ACO ANSELL MAKE WATER CARRIER 4 REQUEST ETA ON NEXT WATER CARRIER - CONTROL ADVISED UNIMOG FROM 15 CAN BE AVAILABLE IF THIS WILL ASSIST - 17C2 AFFIRMATIVE CAN THEY MAKE THEIR WAY HERE - ETA FOR NEXT WATER CARRIER - CONTROL CONFRIM FROM YEOVIL - STILL MAKE WATER CARRIER 4
08:44:24	**** N903	Key CONTROL GAVE DIRECTION DETAILS - N903 ACK
08:45:00	**** G4	Assigned to incident 012211-27122012
08:45:00	**** G4	Status changed from IA - In Attendance to AS - Assign
08:45:07	**** G4	Key NORMAL ROAD SPEED
08:45:07	**** G4	Status changed from AS - Assign to MI - Mobile Incident
08:46:14	****	Key CM NICHOL WAREHAM HAS SAID THEY COULD MAKE THE UNIMOG AVAILABLE IF THIS WOULD ASSIST - INCIDENT COMMANDER CONTACTED AND CONFIRMED IT WOULD BE REQUIRED DUE TO WATER DIFFICULTIES
08:46:26	**** 15P9	Assigned to incident 012211-27122012
08:46:26	**** 15P9	Role set to UNIMOG
08:46:26	**** 15P9	Status changed from HA - Home - A Alert to AS - Assign

08:46:26	****		Mobilisation BJB Turnout 15P9 (A) to 012211-27122012
08:46:30	****	15P9	Status changed from AS - Assign to 51 - Alerted Incident
08:46:30	****		Incident turnout to 15 for 15P9 completed [23829]
08:49:00	****	14P1	Informative FROM WM STIRLING - VIA EXTEL FIRE SAFETY OFFICER REQUIRED - ENSURE HE HAS FIRE SAFETY PLANS OF BUILDING - REPORT TO COMMAND SUPPORT - INFORM EA OF WATER RUN-OFF AND SMOKE POLLUTION - WELFARE UNIT WHEN AVAILABLE
08:50:40	****		FROM ACO ANSELL - WATER CARRIERS ARE URGENTLY NEEDED BECAUSE OF THE POOR WATER SUPPLY - ADVISED WRC ATTENDING FROM 26 18 YEO AND FORDINGBRIDGE - STN 03 CURRENTLY AT SBY 08 - CAN BE RETURNED SO THAT THEIR WATER CARRIER CAN BE AVAILABLE - WAREHAM UNIMOG SENT TO ASSIST.
08:50:40	****		Details changed from MAKE PUMPS 10 - MAKE ALPS 2 - WATER CARRIERS 3 05S1 AS COMMAND SUPPORT OFFICER to MAKE PUMPS 10 - MAKE ALPS 2 - WATER CARRIERS 4 05S1 AS COMMAND SUPPORT OFFICER
08:50:57	****		Incident turnout to 15 for 15P9 no crew acknowledgement received [23829]
08:51:08	****		Make Water Carrier 5 Requested
08:51:08	****	FOR9W	Status changed from AS - Assign to MI - Mobile Incident
08:51:19	****	FOR9W	Officer in charge changed from to FF CLARK
08:51:19	****	FOR9W	Riders changed from 0 to 2
08:51:21	****		FROM ACO ANSELL - MAKE WRC 5
08:52:07	****	FOR9W	Key CONTROL PASSED DIRECTIONS - FOR9W ACK
08:53:10	****	21S4	Status changed from MH - Mobile Home to AS - Assign
08:53:10	****	21S4	Assigned to incident 012211-27122012
08:53:10	****	21S4	Clear from incident 012195-27122012
08:53:16	****	21S4	Status changed from AS - Assign to MI - Mobile Incident

08:53:54	****		Key CONTROL NOTE - 03P4 ORDERED TO RETURN TO HS FROM SBY 08 ON BLUE LIGHTS TO COLLECT WATER CARRIER TO ATTEND THIS INCIDENT
08:54:11	****		Key EA INFORMED - LOG 1072908
08:54:28	****	03T9	Role changed from Prime Mover to Escort for N901 at 03
08:54:28	****	N901	Assigned to incident 012211-27122012
08:54:28	****	03T9	Status changed from HA - Home - A Alert to AS - Assign
08:54:28	****	03T9	Assigned to incident 012211-27122012
08:54:28	****	N901	Role set to Water Carrier
08:54:28	****	N901	Status changed from HA - Home - A Alert to AS - Assign
08:54:28	****	03T9	Role set to Prime Mover
08:54:32	****	03T9	Status changed from AS - Assign to 51 - Alerted Incident
08:54:32	****	N901	Status changed from AS - Assign to 51 - Alerted Incident
08:54:33	****		Incident turnout to 03 for 03T9,N901,03T9 completed [23838]
08:55:30	****		012229-27122012 identified as a repeat of this incident
08:56:12	****		Key VG019 MOBILE TO LYTCHETT MINSTER FOR INCIDENT LIAISON
08:57:27	****	15P9	Riders changed from 0 to 2
08:57:27	****	15P9	Status changed from 51 - Alerted Incident to MI - Mobile Incident
08:57:27	****	15P9	Officer in charge changed from UNIMOG to CM NICOL
08:57:46	****	G4	Status changed from MI - Mobile Incident to IA - In Attendance
08:58:56	****	VG019	Role set to
08:58:56	****	VG019	Assigned to incident 012211-27122012
08:58:56	****	VG019	Status changed from 04 - Home Station to AS - Assign
08:59:11	****	VG019	Status changed from AS - Assign to MI - Mobile Incident
08:59:11	****	VG019	Officer in charge changed from to GM CREEGAN
08:59:11	****	VG019	Riders changed from 0 to 1
09:00:29	****	N903	Status changed from MI - Mobile Incident to

09:01:19	****	26T3	HA - Home - A Alert Status changed from MI - Mobile Incident to AS - Assign
09:01:19	****	N903	Status changed from MI - Mobile Incident to AS - Assign
09:01:19	****	26T3	Assigned to incident 012211-27122012
09:01:19	****	N903	Assigned to incident 012211-27122012
09:01:26	****	N903	Status changed from AS - Assign to IA - In Attendance
09:01:26	****	26T3	Status changed from AS - Assign to IA - In Attendance
09:06:55	****		Details changed from MAKE PUMPS 10 - MAKE ALPS 2 - WATER CARRIERS 4 05S1 AS COMMAND SUPPORT OFFICER to FIRE INVESTIGATION OFFICER REQUIRED
09:07:10	****		Key ACFO ANSELL REQUEST ATTENDANCE OF FIRE INVESTIGATION OFFICER
09:07:41	****	N902	MOBILE BACK TO INCIDENT FROM HYDRANT
09:08:23	****	YEO8	Status changed from MI - Mobile Incident to IA - In Attendance
09:08:40	****	YEO9W	Status changed from MI - Mobile Incident to IA - In Attendance
09:08:50	****	S26	Assigned to incident 012211-27122012
09:08:50	****	S26	Role changed from Ops to Fire Investigation
09:08:50	****		Mobilisation
09:08:50	****	S26	Status changed from 81 - Mobile Available - Tomtom to AS - Assign
09:08:55	****		Linked as parent of 012230-27122012
09:08:56	****	S26	Status changed from AS - Assign to AL - Alerted Incident
09:09:26	****	YEO2	Status changed from MI - Mobile Incident to IA - In Attendance
09:09:39	****	S26	Status changed from AL - Alerted Incident to 82 - Mobile to Incident - Tomtom
09:09:42	****		Key SM ROGERS MOBILISED AS FIRE INVESTIGATION OFFICER
09:09:58	****	S26	Processing action status [Mobile to Incident - Tomtom] for status [82]
09:11:37	****	17C2	Informative ACFO ANSELL - BUILDING USED AS

		SCHOOL CONSTRUCTED OF 3 FLOORS - 17M BY 13M - FULLY DEVELOPED FIRE IN GF FIRST FLOOR AND ROOFSPACE - INCIDENT IN 2 SECTORS - 1 ALP IN USE - INTERNAL FIREFIGHTING WITHDRAWN AT THIS STAGE - THIS IS DUE TO RISK OF INTERNAL COLLAPSE - SECOND ALP GOT TO WORK IN SECTOR 3 - DUE TO LIMITED WATER SUPPLY - 4 WATER CARRIERS REQUESTED - THIS REQUESTED FOR WATER SHUTTLE TO MAINTAIN WATER SUPPLY
09:11:37	**** 17C2	Tactical OFFENSIVE
09:11:41	**** 15P9	Status changed from MI - Mobile Incident to IA - In Attendance
09:12:04	**** G4	Status changed from IA - In Attendance to MA - Mob Avail
09:12:37	**** O2	Role set to Miss
09:12:37	**** O2	Status changed from UN - Unavailable to AS - Assign
09:12:37	****	Mobilisation SJ Turnout O2 (V) to 012211-27122012
09:12:45	**** S26	Remarks changed from ON PAGER
09:12:46	**** O2	Status changed from AS - Assign to MI - Mobile Incident
09:16:10	**** 03T9	Riders changed from 0 to 2
09:16:10	**** 03T9	Officer in charge changed from PRIME MOVER to ACM BEAZER
09:16:10	**** N901	Status changed from 51 - Alerted Incident to MI - Mobile Incident
09:16:10	**** N901	Riders changed from 0 to 2
09:16:10	**** N901	Officer in charge changed from WATER CARRIER to ACM BEAZER
09:16:10	**** 03T9	Status changed from 51 - Alerted Incident to MI - Mobile Incident
09:21:00	**** 17C2	23A1 NO LONGER REQUIRED AT THIS INCIDENT
09:21:13	****	012232-27122012 identified as a repeat of this incident
09:21:40	**** FOR9W	Status changed from MI - Mobile Incident to IA - In Attendance
09:31:36	**** VG019	Status changed from MI - Mobile Incident to IA - In Attendance
09:31:36	**** VG019	
09:32:33	****	Key

		CONTROL NOTE - ATTEMPTS MADE TO CONTACT A FIRE SAFETY OFFICER TO DELIVER PLANS TO THE INCIDENT - NO RESPONSE. THEREFORE SM NAIRN CONTACTED - HE WILL ATTEND SHQ TO PRINT OFF PLANS AND WILL DELIVER THEM TO THE INCIDENT.
09:34:31	****	Key DAVID BEAVIS - DEPO - HAS RECEIVED INFO REF INCIDENT IF ANY UPDATE REF ARSON PLS UPDATE BY DEPO PAGER
09:35:05	****	Key MARK WOODFIELD CONTACTED TO SEE WHETHER HE CAN ACCESS ANY OF THE SYSTEMS WHERE THE PLANS FOR LYTCHETT MINSTER SCHOOL MAY BE HELD.
09:35:56	**** 16P4	Role changed from Pump(s) to Safety Crew
09:36:57	**** YEO2	Role changed from Pump(s) to Safety Crew
09:38:32	****	17C2 IACFO ANSELL AMMEND TO READ ASSISTANCE MESSAGE REQUEST ATTNEDANCE OF PURBECK DISTRICT COUNCIL BUILDING INSPECTOR - DUE TO CRACKED BUILDING AND SAGGING METAL WORK
09:39:57	**** S26	Status changed from 82 - Mobile to Incident - Tomtom to 86 - In Attendance - Tomtom
09:40:53	****	Key PURBECK DISTRICT COUNCIL NOT WORKING BETWEEN CHRISTMAS AND NEW YEAR - OUT OF HOURS NUMBER CURRENTLY ENGAGED.
09:41:53	****	012233-27122012 identified as a repeat of this incident
09:42:04	****	Action Fire Investigation Officer to attend all incidents Completed SM FRAMPTON IS FI AND COMMAND SUPPORT
09:42:40	****	Action Consider the attendance of a Fire Investigation Of Completed SM FRAMPTON AS FI
09:44:11	****	STILL NO RESPONSE FROM PURBECK OUT OF HOURS SERVICE - LINE STILL ENGAGED
09:47:09	****	Key

09:52:09	****		HAMPSHIRE UPDATED OF INCIDENT Key SM NAIRN PROCEEDING TO SHQ TO COPY PLANS FOR FIRE SAFETY THEN PROCEEDING TO INCIDENT 17C2 ACK - AND UPDATE IF FURTHER REQUIRED HART TEAM IN ATTENDANCE
09:52:14	****	21S4	Status changed from MI - Mobile Incident to IA - In Attendance
09:54:28	****	17C2	Tactical TRANSITIONAL
09:54:28	****	17C2	Informative ACFO ANSELL - GABLE END OF BUILDING NOW COLLAPSED - 5 MAIN LINES AND 1ALP IN USE 1LPP - SECOND ALP CANNOT BE USED DUE TO WIND DIRECTION AND SITING AREA
09:54:37	****		Action If msg received stating 07A1 at work or being prep Completed 07A1 IN USE -
09:54:56	****		Action Inform CFO (on and off duty) for incidents involved Completed CFO INFORMED
09:56:07	****		Action For multi-agency incidents with Gold Command running Completed GOLD COMMAND ACFO ANSELL - INFORMED AND IN ATTENDANCE - ALSO NOW INCIDENT COMMANDER
10:04:29	****		Key SM NAIRN ATTEMPTING TO LOCATE FIRE SAFETY PLANS BUT ASKING WHAT IF ANY PLANS ARE AVAILABLE ON SCENE - MESSAGE PASSED TO 17C2 WHO ADVISED BASIC PLANS AVAILABLE ON SITE BUT REQUIRE WHATEVER MORE DETAILED INFORMATION IS AVAILABLE FROM FIRE SAFETY - MESSAGE PASSED BACK TO SM NAIRN
10:04:31	****	N902	HYDRANT IN USE POOLE RD UPTON
10:08:11	****	18R3	Status changed from IA - In Attendance to MH - Mobile Home
10:09:43	****		LINE STILL ENGAGED TO PURBECK LA OUT OF HOURS CONTACT NUMBER.
10:10:29	****		SM BROWN IS ATTEMPTING TO LOCATE FIRE SAFETY PLANS FOR THE BUILDING AND WILL DELIVER TO THE INCIDENT IF

10:12:18	****	N902	FOUND Key HYDRANT NOW FINISHED - MOBILE BACK TO INCIDENT]
10:13:28	****		Key DIFFICULTY IN CONTACTING BUILDING OFFICER DISCUSSED WITH GM LEGG - HE IS GOING TO TRY SOME OTHER CONTACTS
10:14:51	****	17C2	Key VIA EXTEL REQUEST TIME OF CALL FOR FIRE INVESTIGATION - PASSED 0707HRS
10:18:15	****	17C2	Informative ACFO ANSELL - GABLE END OF NORTH BUILDING HAS NOW COLLAPSED - INTERNAL FLOOR ALSO COLLAPSED - SALVAGE OPERATION IN PLACE FOR VALUED ELECTRICAL EQUIPMENT - 1 ALP IN USE IN SECTOR 1 - LIMITED ON SITE WATER SUPPLIES - ON SITE HYDRANT AND ORNAMENTAL WATER SUPPLIES BEING SUPPLEMENTED BY WATER SHUTTLE - USING 3 WATER CARRIERS AND UNIMOG - WATER SUPPLY VIA SEPERATE MAIN IN UPTON AREA TO MAXIMISE LOCAL SUPPLY - THIS HAS BEEN APPROVED BY ON SCENE WATER OFFICER
10:18:30	****	17C2	Tactical TRANSITIONAL
10:19:13	****		DUTY EMERGENCY PLANNING OFFICER PAGED TO SEE IF HE CAN ASSIST WITH A HIGHER PRIORITY CONTACT NUMBER FOR PURBECK BUILDING CONTROL OFFICER.
10:19:23	****	18R3	Status changed from MH - Mobile Home to HS - Home Station
10:22:52	****		Key SPOKEN TO DEPO AND INFORMED HIM OF THE PROBLEM, HE WILL TRY A COUPLE OF NUMBERS HE HAS FOR BUILDING OFFICERS AND WILL COME BACK TO US
10:27:06	****		Key NOW HOLDING IN QUEUE FOR PURBECK OUT OF HOURS CONTACT LINE
10:32:39	****		17C2 FROM ACFO REQUIRE 1 FUEL BOWSER AT THIS INCIDENT
10:34:50	****		Key

10:35:30	****	FRSNCC - UPDATED WITH PRIME MOVERS IN USE - EMAIL SENT AS WELL DAVID BEAVIS HAS CONTACTED A DCC STRUCTURAL ENGINEER WHO IS CLEARED TO ATTEND - HIS NAME IS MARTIN KENNEDY Redacted number - HE WILL BE CONTACTING US FOR LOCATION/ACCESS DETAILS ETC
10:36:17	****	Key PETER DOWNTON ARRANGING FOR FUEL BOWSER TO BE TRANSPORTED FROM DORCHESTER FIRE STATION
10:37:45	**** S9	Assigned to incident 012211-27122012
10:37:45	**** S9	Status changed from 92 - Pager Contact - Tomtom to AS - Assign
10:37:51	****	Key MARTIN KENNEDY Redacted number - STRUCTURAL ENGINEER DCC - ETA 1 HOUR
10:37:55	****	Incident turnout to S9 for S9 failed [23928]
10:38:15	****	Key SM BROWN ATTENDING AT NORMAL ROAD SPEED AS AN OBSERVER
10:38:44	****	Key 17C2 ACFO ANSELL REQUIRE 1 ADDITIONAL WATER CARRIER AT INCIDENT AS THE MAN IS BEING USED FOR OTHER PURPOSES ADVISED BRIDPORT WATER CARRIER EN ROUTE - IS THIS SUFFICIENT? 17C2 REPLIED - IN ADDITION TO BRIDPORT WATER CARRIER - TOTAL OF 6
10:38:58	****	Make Water Carrier 6 Requested
10:38:59	****	Key 17C2 ACFO ANSELL REQUIRE 1 ADDITIONAL WATER CARRIER AT INCIDENT AS THE MAN IS BEING USED FOR OTHER PURPOSES ADVISED BRIDPORT WATER CARRIER EN ROUTE - IS THIS SUFFICIENT? 17C2 REPLIED - IN ADDITION TO BRIDPORT WATER CARRIER - TOTAL OF 6
10:39:05	**** 03T9	Status changed from MI - Mobile Incident to IA - In Attendance
10:39:05	**** N901	Status changed from MI - Mobile Incident to

		IA - In Attendance
10:39:13	**** S9	Status changed from AS - Assign to AL - Altered Incident
10:39:16	**** WIL9W	Assigned to incident 012211-27122012
10:39:16	**** WIL9W	Role set to Water Carrier
10:39:16	****	Mobilisation AS
		Turnout to 012211-27122012
10:39:45	**** S9	Status changed from AL - Altered Incident to 82 - Mobile to Incident - Tomtom
10:39:58	****	Action Prompt Cancelled: 012211-27122012 make Water Carrier 6
10:40:22	****	Key
		DORCHESTER STATION VAN NOT AVAILABLE FOR FUEL BOWSER - PETE DOWNTON UPDATED - MECHS HAVE ANOTHER VEHICLE USED
10:40:45	****	WILTSHIRE CONTACTED - WILTON WATER CARRIER ORDERED - WILL COME ONTO DORSET SCHEME - THEIR INC REF 12060
10:40:49	**** 17C2	ACK ETA OF STRUCTURAL ENGINEER AND THAT NO PLANS AVAILABLE FROM DFRS BUT STRUCTURAL ENGINEER WAS INVOLVED IN THE BUILDING OF THE SCHOOL
10:40:53	**** WIL9W	Status changed from AS - Assign to AL - Altered Incident
10:41:15	****	Key
		FROM NICK HYDE - FUEL BOWSER OUT IN APPROX 10 MINS
10:41:52	**** N903	Status changed from IA - In Attendance to AS - Assign
10:41:52	**** N903	Assigned to incident 012211-27122012
10:41:52	**** 26T3	Status changed from IA - In Attendance to AS - Assign
10:41:52	**** 26T3	Assigned to incident 012211-27122012
10:41:55	**** N903	
10:41:55	**** 26T3	
10:41:55	**** 26T3	Status changed from AS - Assign to IA - In Attendance
10:41:55	**** N903	Status changed from AS - Assign to IA - In Attendance
10:41:57	**** FDU2	Status changed from TC - Telephone Contact to AS - Assign
10:41:57	****	Mobilisation AS
		Turnout FDU2 (V) to 012211-27122012

10:41:57	****	FDU2	Role set to FDU
10:45:12	****	17C2	ACFO ANSELL FURTHER TWO FLEXI DUTY OFFICERS REQUIRED FOR COMMAND SUPPORT AND MEDIA
10:47:44	****	S24	Assigned to incident 012211-27122012
10:47:44	****	S24	Status changed from 88 - Home Address available - Tomto to AS - Assign
10:47:44	****		Mobilisation AS Turnout S24 (P , T) to 012211-27122012
10:48:02	****		Key SM CREIGHTON ATTENDING FOR COMMAND SUPPORT
10:48:29	****	S9	Role changed from Ops to Liaison Officer
10:49:53	****	S24	Status changed from AL - Alerted Incident to 82 - Mobile to Incident - Tomtom
10:50:02	****		Key FROM GM LEGG - DUE TO NO OTHER FLEXI OFFICERS AVAILABLE - SM BROWN WHO IS ATTENDING AS OBSERVER SO HE IS REQUESTED TO TAKE MEDIA ROLE ON ARRIVAL
10:52:28	****	18P2	Riders changed from 5 to 4
10:52:28	****	18P2	Officer in charge changed from WM COOPER to WM WILKINSON
10:57:03	****	17C2	BUILDING CONTROL NOW IN ATTENDANCE
10:57:51	****	17C2	Informative SOUTHERN GAS NOW IN ATTENDANCE
10:58:35	****	S24	Status changed from 82 - Mobile to Incident - Tomtom to 86 - In Attendance - Tomtom
11:00:41	****	17C2	Informative ACFO ANSELL FIRE SURROUNDED - TWO ALPS IN USE BEING FED BY WATER SHUTTLE CONSISTING OF 6 WRC AND NUMEROUS PUMPS - 1 HYDRANT IN USE ON SITE SUPPLYING ONE HAND BRANCH OFFENSIVE
11:09:23	****	N901	HYDRANT IN USE UPTON COURT
11:11:38	****		Key 17C2 PLEASE CONTACT WATER COMPANY TO INCREASE FLOW IN ST PETERS FINGER AREA
11:12:11	****	17C2	Key KT ASKED 17C2 TO PASS DETAILS OF RELIEF REQUIREMENTS AT THEIR

		EARLIEST CONVENIENCE
11:14:35	****	Key WESSEX WATER ASKED TO INCREASE FLOW IN ST PETERS FINGER AREA THEY STATE PROBABLY UNLIKELY BUT WILL CONTACT INSPECTORS AND LET US KNOW
11:15:01	**** 17C2	ACK
11:15:05	****	Key FROM STN 08 THE FUEL BOWSER IS LEAVING FROM THE STATION TO THE INCIDENT
11:15:26	**** FDU2	Status changed from AS - Assign to MI - Mobile Incident
11:15:28	**** S9	Status changed from 82 - Mobile to Incident - Tomtom to 86 - In Attendance - Tomtom
11:18:40	**** WIL9W	Status changed from AL - Alerted Incident to IA - In Attendance
11:18:40	**** WIL9W	Current location changed from WWIL to 17
11:18:40	**** WIL9W	Riders changed from 0 to 2
11:18:40	**** WIL9W	Officer in charge changed from to FF GILBERT
11:19:03	**** WIL9W	Status changed from IA - In Attendance to MI - Mobile Incident
11:19:17	**** WIL9W	Mobile time changed from 11:19:03 27/12/2012 to 10:45:00 27/12/2012
11:23:57	**** N902	HYDRANT IN USE POOLE RD
11:24:24	****	Agency Water Requested WESSEX WATER - CONTROL ROOM - REF INCREASE IN WATER PRESSURE - SPOKE TO REGIONAL INSPECTOR - WILL BE ABLE TO INCREASE THE WATER PRESSURE A LITTLE WILL ATTEND THE INCIDENT NO ETA
11:24:55	****	Key TERRY FROM SALVATION ARMY CONTACTED CONTROL TO SEE IF FEEDING WAS LIKELY TO BE REQUIRED AT THIS INCIDENT AS THEY WERE CURRENTLY ABLE TO PROVIDE IT BUT MAY NOT BE ABLE TO LATER. STATED IT HADNT BEEN REQUESTED CURRENTLY BUT WE WOULD CONTACT THE INCIDENT COMMANDER TO ASCERTAIN.
11:25:14	**** 17C2	ACK WESSEX WATER INFO
11:25:26	**** N901	HYDRANT NOW DISCONTINUED

11:26:41	****		Key 17C2 CONTACTED FOR THE ABOVE INFORMATION.
11:27:06	****	17C2	Informative INCREASE IN UPTON AREA TOO IF POSSIBLE
11:27:46	****	17C2	ATTENDANCE OF SALVATION ARMY NOT REQUIRED
11:28:44	****	17C2	Informative INCREASE ALSO REQUIRED DORCHESTER RD UPTON
11:30:01	****		Agency Water Informed WESSEX WATER ASKED TO LOOK AT DORCHESTER RD UPTON TOO
11:32:10	****		Key WESSEX WATER CONTROL ROOM REF DORCHESTER ROAD, UPTON - UNABLE TO INCREASE PRESSURE OR FLOW
11:32:48	****	17C2	Key ACK MESSAGE FROM WESSEX WATER
11:34:02	****	N902	HYDRANT NOW DISCONTINUED
11:36:39	****		Key FROM WILTON WATER CARRIER - THEY HAVE NO RADIO COMMS - CONTACTABLE VIA MOBILE Redacted number- THEIR ETA AT SCENE APPROX 15 MINS
11:38:31	****		Key 17C2 INFORMED OF ETA OF WIL9W. REQUESTED THEY ENSURE THEIR FAX IS OPERATIONAL AS RECEPTION WILL BE FAXING A LIST OF APPLIANCES IN ATTENDANCE ON OUR BEHALF.
11:43:04	****	17C2	Informative ACFO ANSELL - NO CHANGE FROM LAST INFORMATIVE - ELECTRICAL SUPPLY NOW ISOLATED WITH EXCEPTION OF BUILDING INVOLVED IN FIRE - EFFORTS AT THIS TIME BEING MADE TO LOCATE AND ISOLATE GAS SUPPLY
11:43:04	****	17C2	Tactical OFFENSIVE
11:44:19	****		FROM FIREMET - WIND SPEED IS DUE TO INCREASE BACK TO 9.0 M/S AND CHANGING TO WNW DIRECTION.
11:46:44	****	18R2	Status changed from IA - In Attendance to HS - Home Station

11:49:14	****	Key 17C2 FAX NOT WORKING - LIST OF APPLIANCES GIVEN BY MOBILE PHONE
11:54:46	**** 14P1	Officer in charge changed from CM PLUMLEY to WM STIRLING
11:56:39	**** 19P1	Officer in charge changed from to TWM TUCKER
11:56:39	**** 19P1	Riders changed from 0 to 4
11:59:32	****	Key FROM CSU VIA EXTEL - SM ROGERS HAS NOW COMPLETED INITIAL FIRE INVESTIGATION - HE WILL BE AVAILABLE ON PAGER FROM THE INCIDENT AND WILL BE REMAINING ON SCENE FOR A SHORT WHILE.
11:59:45	**** S26	Status changed from 86 - In Attendance - Tomtom to 87 - At Incident available - Tomtom
12:09:45	****	Key SALVATION ARMY CONTACTED AND INFORMED THAT WE WOULD NOT BE NEEDING THEIR ASSISTANCE
12:10:15	****	Status changed from O - On Scene to S - Stop
12:10:15	**** 17C2	Tactical OFFENSIVE
12:10:15	**** 17C2	Stop ACFO ANSELL - BULDING USED AS SCHOOL OF 2 FLOORS APPROX 70M BY 30M - FIRE IN GRAINSFORD THEATRE BLOCK ROOFSpace WHICH SPREAD TO ENTIRE BLOCK - EXT USING 2 ALP, 9JETS, 1 UNIMOG, 6BA AND 1 X 135 LADDER - 1 HYDRANT IN USE - 6 WATER CARRIERS AND 10 PUMPS IN USE FOR WATER SHUTTLE - BUILDING DEEMED UNSAFE BY DCC BUILDING CONTROL FOLLOWING PARTIAL BUILDING COLLAPSE - SCALED DOWN TO 6 PUMPS AND CURRENT SPECIALS - FULL DETAILS OF RELIEFS TO BE PASSED AT LATER DATE
12:11:12	**** 17C2	Informative CONFIRM BULDING SIZE 70M BY 13M
12:15:06	****	Key WESSEX WATER PRESSURE FOR MAIN IN LYTCHETT MINSTER VILLAGE HAS BEEN INCREASED

		FROM 3.5 TO 5 BAR AT PRESSURE REGULATOR VALVE
		UPDATE CONTROL ROOM ASAP WHEN INCREASED PRESSURE NO LONGER REQUIRED
12:16:25	**** 17C2	Informative ACK DETAILS RE PRESSURE INCREASE
12:17:47	**** O2	Admin page to O2 - by Vodapage - Redacted information not relevant to this incident- sent
12:18:36	**** S26	Admin page to S26 - by Vodapage - PLEASE CONTACT CONTROL WHEN POSSIBLE - THANKS - sent
12:19:46	**** N901	HYDRANT IN USE JCT OLD KILN RD
12:20:10	**** 17C2	Informative DCC STRUCTURAL ENGINEER AND ARCHITECT NOW IN ATTENDANCE
12:22:12	****	Key 17C2 ASKED TO CHECK WHETHER WIL9W AND FDU2 IN ATTENDANCE
12:22:15	**** WIL9W	Status changed from MI - Mobile Incident to IA - In Attendance
12:22:23	**** FDU2	Status changed from MI - Mobile Incident to IA - In Attendance
12:22:23	**** FDU2	Current location changed from 08 to 17
12:24:35	****	Key COMMAND SUPPORT VIA EXTEL - NEED 6 APPLIANCE RELIEF CREW ASAP -
12:27:10	**** N901	HYDRANT NOW DISCONTINUEDF
12:27:13	****	Key GM LEGG ARCHITECT PLANS ON ROUTE TO INCIDENT WITH LEE ALLEY
12:28:24	**** 26T3	HYDRANT IN USE JCT POOLE RD BLANDFORD RD
12:30:41	****	Agency Water Informed WESSEX WATER INFORMED THAT WATER CARRIER TANKS ARE BEING REPLENISHED
12:31:52	**** 16P1	Status changed from IA - In Attendance to MH - Mobile Home
12:32:13	****	FROM 17C2 VIA EXTEL - FOR THE INFORMATION OF THE RELIEF CREWS PLEASE CAN THEY ACCESS THE INCIDENT VIA THE ST PETERS FINGER ENTRY POINT

- THIS WILL MENA TRAVELLING AGAINST THE ONE WAY SYSTEM

12:33:42 ** Mobilisation RAM**
Turnout 05P1 (V) to 012211-27122012

12:33:42 ** 05P1 Clear from incident 012236-27122012**

12:33:42 ** 05P1 Status changed from MS - Mobile Stby to AS - Assign**

12:34:10 ** Mobilisation AS**
Turnout 07P1 (V) to 012211-27122012

12:34:10 ** 07P1 Assigned to incident 012211-27122012**

12:34:10 ** 07P1 Clear from incident 012242-27122012**

12:34:10 ** 07P1 Status changed from SM - Mobile Stby Area to AS - Assign**

12:34:38 ** 05P1 Status changed from AS - Assign to MI - Mobile Incident**

12:34:43 ** 05P1 ACK ACCESS**

12:35:13 ** Key**
FROM ACFO ANSELL VIA EXTEL - UPDATE ON INCIDENT - IT WILL SHORTLY BE SCALING DOWN TO 6 DORSET APPLIANCES PLUS SPECIALS. REQUESTED OFFICER AVAILABILITY. INFORMED HIM THAT S7 S23 S26 WERE THE ONLY AVAILABLE OFFICERS WITH S7 BEING THE LONGEST RESTED. ACFO ANSELL REQUESTED SM NAIRN ATTEND THE INCIDENT FOR 1400 HRS AS A RELIEF OFFICER

12:35:27 ** 07P1 Status changed from AS - Assign to MI - Mobile Incident**

12:35:53 ** 07P1 ACK ACCESS**

12:38:29 ** 05S1 Status changed from IA - In Attendance to MH - Mobile Home**

12:39:39 ** 26T3 HYDRANT NOW DISCONTINUED**

12:42:50 ** 12P1 Clear from incident 012248-27122012**

12:42:50 ** 12P1 Assigned to incident 012211-27122012**

12:42:50 ** Mobilisation DC**
Turnout 12P1 (R) to 012211-27122012

12:42:50 ** 12P1 Status changed from 53 - Alerted to standby to AS - Assign**

12:43:44 ** 15P1 Status changed from IA - In Attendance to MH - Mobile Home**

12:44:01 ** 05S1 AWAITING OS ST PETERS FINGER FOR A MEMBER OF CREW FROM 05P1**

12:45:18 ** Key**

12:46:06	****		FROM 17C2 VIA EXTEL - ALP RELIEF REQUIRED TO RELIEVE D&S APPLIANCE - NO SUPPORT APPLIANCE REQUIRED.
12:46:06	****		Details changed from FIRE INVESTIGATION OFFICER REQUIRED to 23A1 TO PROCEED AS RELIEF ALP - NO SUPPORT PUMP REQUIRED.
12:46:14	****	23A1	Assigned to incident 012211-27122012
12:46:14	****	23A1	Status changed from HS - Home Station to AS - Assign
12:46:15	****	23A1	Status changed from AS - Assign to 51 - Alerted Incident
12:46:15	****		Incident turnout to 23 for 23A1 completed [24012]
12:47:35	****	23A1	Status changed from 51 - Alerted Incident to MI - Mobile Incident
12:47:45	****		
12:49:18	****	12P1	Status changed from 51 - Alerted Incident to MI - Mobile Incident
12:49:38	****	12P1	Riders changed from 0 to 5
12:49:38	****	12P1	Officer in charge changed from to WM VINING
12:50:38	****	19P2	Status changed from IA - In Attendance to MH - Mobile Home
12:51:01	****	05P1	CLEAR OF CHAIN FERRY AND EN ROUTE
12:51:09	****	13P7	Status changed from IA - In Attendance to MH - Mobile Home
12:52:04	****	13P7	HYDRANT IN USE COVENTRY CLOSE CORFE MULLEN
12:53:19	****	16P1	Current location changed from 15 to 16
12:54:03	****		Linked as parent of 012242-27122012
12:55:08	****	N902	HYDRANT IN USE POOLE RD UPTON
12:55:19	****	15P1	Status changed from MH - Mobile Home to HS - Home Station
12:56:18	****	07P1	Status changed from MI - Mobile Incident to IA - In Attendance
13:01:40	****	17C2	POOLE PUMP IS TIED UP AT THIS INCIDENT
13:05:54	****	03P4	Assigned to incident 012211-27122012
13:05:54	****	03P4	Clear from incident 012250-27122012
13:05:54	****	03P4	Status changed from SB - Standby Station to AS - Assign
13:05:55	****	03P4	Status changed from AS - Assign to 51 - Alerted Incident
13:05:55	****		Incident turnout to 07 for 03P4 completed [24022]

13:06:00	****	03P4	Status changed from 51 - Alerted Incident to MI - Mobile Incident
13:06:21	****	03P4	ACK ACCESS
13:06:22	****	03P1	Status changed from SB - Standby Station to AS - Assign
13:06:22	****		Mobilisation AS Turnout 03P1 (W) to 012211-27122012
13:06:22	****	03P1	Clear from incident 012221-27122012
13:06:22	****	03P1	Assigned to incident 012211-27122012
13:06:23	****		Incident turnout to 15 for 03P1 completed [24024]
13:06:23	****	03P1	Status changed from AS - Assign to 51 - Alerted Incident
13:08:57	****	16P1	Status changed from MH - Mobile Home to HS - Home Station
13:08:57	****	16P1	Clear from incident 012211-27122012
13:09:18	****	17C2	ACK ASK S26 TO CONTACT CONTROL
13:10:03	****	03P1	Status changed from 51 - Alerted Incident to MI - Mobile Incident
13:10:15	****	03P1	ACK ACCESS
13:12:57	****	19P2	Clear from incident 012211-27122012
13:13:49	****	23A1	Current location changed from 23 to 17
13:13:49	****	23A1	Status changed from MI - Mobile Incident to IA - In Attendance
13:16:36	****	S26	Assigned to incident 012206-27122012
13:16:36	****	S26	Role changed from Fire Investigation to Ops
13:16:36	****	S26	Status changed from 87 - At Incident available - Tomtom to AS - Assign
13:16:36	****	S26	Clear from incident 012211-27122012
13:17:00	****	N902	HDRANT DISCONTINUED
13:21:28	****		Key 17C2 VIA EXTEL - REQUEST DETAILS OF 6 RELIEF APPLIANCES AND THEIR ETA - CONFIRMED RELIEF CREWS ARE 07P1, 05P1, 12P1, 03P4, 03P1, 13P1. SM NAIRN WILL BE IN ATTENDANCE AT 1400 HRS AS RELIEF OFFICER.
13:22:42	****	03P1	Status changed from MI - Mobile Incident to IA - In Attendance
13:23:46	****	VG019	Status changed from IA - In Attendance to MH - Mobile Home
13:24:19	****		Key 17C2 REQUIRE ETA FOR RELIEF CREWS 05P1 4-5MINS 12P1 2 MINS

		03P4 20 MINS
		13P1 YET TO BOOK MOBILE
		17C2 ACK
13:25:56	**** 13P7	Clear from incident 012211-27122012
13:26:12	**** 12P1	Status changed from MI - Mobile Incident to IA - In Attendance
13:26:42	**** YEO2	Status changed from IA - In Attendance to MH - Mobile Home
13:27:02	****	Key
		CM PLUMLEY 13P1 FOR RELIEFS - WILL GET CREW TOGETHER
13:27:19	**** YEO8	Status changed from IA - In Attendance to MH - Mobile Home
13:27:36	**** N902	Status changed from IA - In Attendance to MH - Mobile Home
13:28:10	**** 05P1	Status changed from MI - Mobile Incident to IA - In Attendance
13:28:17	**** S7	Role changed from Ops to Command Support
13:28:17	**** S7	Assigned to incident 012211-27122012
13:28:17	**** S7	Status changed from 81 - Mobile Available - Tomtom to AS - Assign
13:28:23	**** S7	Status changed from AS - Assign to MI - Mobile Incident
13:28:26	****	Incident turnout to S7 for S7 completed [24031]
13:28:40	**** S7	Status changed from MI - Mobile Incident to 82 - Mobile to Incident - Tomtom
13:30:08	****	Linked as parent of 012231-27122012
13:30:52	**** 26T3	HYDRANT IN USE OLD KILN RD
13:31:59	**** 18P4	Status changed from IA - In Attendance to MH - Mobile Home
13:37:15	**** 13P1	Status changed from MI - Mobile Incident to AS - Assign
13:37:15	**** 13P1	Assigned to incident 012211-27122012
13:37:16	**** 13P1	Status changed from AS - Assign to MA - Mobile Avail
13:37:16	**** 13P1	Clear from incident 012211-27122012
13:37:39	**** 13P1	Assigned to incident 012211-27122012
13:37:39	**** 13P1	Status changed from MA - Mobile Avail to AS - Assign
13:37:39	****	Mobilisation AS
		Turnout 13P1 (V) to 012211-27122012
13:37:47	**** 13P1	Status changed from AS - Assign to MI - Mobile Incident

13:38:02	****	13P1	Officer in charge changed from to CM PLUMLEY
13:38:15	****	N902	Status changed from MH - Mobile Home to HS - Home Station
13:38:15	****	N902	Current location changed from 17 to 18
13:38:15	****	N902	Clear from incident 012211-27122012
13:39:40	****		Key SM BROWN MOBILE DOWN TO WEYMOUTH TO PICK UP RELIEFS FOR ALP - ETA APPROX 40 MINS
13:40:22	****	S9	Clear from incident 012211-27122012
13:40:22	****	S9	Status changed from 86 - In Attendance - Tomtom to 85 - Mobile Unavailable - Tomtom
13:40:24	****	03P4	STUCK ON DORCH BYPASS IN HEAVY TRAFFIC - DO YOU REQUIRE US TO PROCEED ON BLUES AND TWOS
13:41:59	****		03P4 STUCK IN HEAVY TRAFFIC ON THE DORCHESTER BY PASS - REQUESTED TO GET THROUGH USING BLUES AND TWOS -
13:45:23	****	YEO9W	Status changed from IA - In Attendance to MH - Mobile Home
13:45:45	****		Key 03P4 - AFFIRMATIVE TO BLUE LIGHTS USING CAUTION - 03P4 ACK
13:45:45	****	25P1	Status changed from IA - In Attendance to MH - Mobile Home
13:46:10	****	26T3	Key MOBILE BACK TO INCIDENT
13:46:38	****	18P4	Clear from incident 012211-27122012
13:48:43	****	19P1	Status changed from IA - In Attendance to MH - Mobile Home
13:53:20	****		Key CM BAKER WEYMOUTH RDS ARRANGING TWO ALP OPS FOR RELIEF
13:54:16	****	16P4	Role changed from Safety Crew to Pump(s)
13:54:16	****	16P4	Clear from incident 012211-27122012
13:54:16	****	16P4	
13:54:37	****	17C2	Informative ACFO ANSELL - DEVOM ALP NOW RELEASED - WATER BEING PUT INTO PLACE TO REPLACE WATER SHUUTTLE AFTER DARK - BUILDING STILL UNSAFE - NO INTERNAL FIREFIGHTING OPERATIONS UNDERTAKEN UNLESS FURTHER INSTRUCTIONS GIVEN BY BUILDING CONTROL

13:54:37	****	17C2	Tactical OFFENSIVE
13:55:22	****		Mobilisation RAM Turnout 16P4 (V) to 012211-27122012
13:55:22	****	16P4	Status changed from MA - Mobile Avail to AS - Assign
13:55:22	****	16P4	Assigned to incident 012211-27122012
13:55:34	****	16P4	Status changed from AS - Assign to IA - In Attendance
13:55:50	****	16P4	Officer in charge changed from to WM CORBEN
13:55:51	****	16P4	Riders changed from 0 to 4
13:56:49	****	19P1	Current location changed from 17 to 19
14:00:14	****	18T9	Status changed from MA - Mobile Avail to AS - Assign
14:00:14	****	18T9	Assigned to incident 012211-27122012
14:00:14	****	N902	Role changed from WRC to Water Carrier
14:00:14	****	N902	Assigned to incident 012211-27122012
14:00:14	****		Mobilisation RAM Turnout 18T9 , N902 (V) to 012211-27122012
14:00:14	****	18T9	Role set to Prime Mover
14:00:14	****	N902	Status changed from MA - Mobile Avail to AS - Assign
14:00:24	****	18T9	Status changed from AS - Assign to MI - Mobile Incident
14:00:24	****	N902	Status changed from AS - Assign to MI - Mobile Incident
14:00:24	****	N902	Officer in charge changed from to CM COLE
14:00:24	****	N902	Riders changed from 0 to 2
14:00:24	****	18T9	Riders changed from 0 to 2
14:00:24	****	18T9	Officer in charge changed from to CM COLE
14:01:01	****	13P1	Status changed from MI - Mobile Incident to IA - In Attendance
14:01:57	****	21P1	Status changed from IA - In Attendance to MH - Mobile Home
14:02:52	****	S7	Status changed from 82 - Mobile to Incident - Tomtom to 86 - In Attendance - Tomtom
14:03:28	****	16P4	Status changed from IA - In Attendance to MH - Mobile Home
14:05:59	****	19P1	Status changed from MH - Mobile Home to HS - Home Station
14:05:59	****	19P1	Clear from incident 012211-27122012
14:07:11	****	18T9	Status changed from MI - Mobile Incident to IA - In Attendance

14:07:11	****	N902	Status changed from MI - Mobile Incident to IA - In Attendance
14:09:00	****	03P4	Status changed from MI - Mobile Incident to IA - In Attendance
14:11:25	****		Linked as parent of 012236-27122012
14:13:36	****		012254-27122012 identified as a repeat of this incident
14:15:20	****	S26	Role changed from Fire Investigation to Command Support
14:15:20	****	S26	Assigned to incident 012211-27122012
14:15:20	****	S26	Clear from incident 012206-27122012
14:15:20	****	S26	Status changed from AL - Alerted Incident to AS - Assign
14:15:31	****	S26	Status changed from AS - Assign to 87 - At Incident available - Tomtom
14:15:31	****	S26	
14:15:50	****		Key FROM HAMPSHIRE FIRE CONTROL - REF FORDINGBRIDGE WATER CARRIER - DO THEY REQUIRE RELIEVING - OR ARE THEY GOING TO BE RELEASED SHORTLY - IF YOU CAN LET US KNOW AND GET BACK TO US PLEASE 17C2 ASKED THE QUESTION AND WILL GET BACK TO FIRE CONTROL WITH A REPLY
14:16:17	****	05S1	Status changed from MH - Mobile Home to HS - Home Station
14:16:17	****	05S1	Clear from incident 012211-27122012
14:17:23	****	17C2	FORDINGBRIDGE WATER CARRIER WOULD REQUIRE A RELIEF
14:18:02	****	17C2	Informative WM VINING IS NOW SECTOR 1 COMMANDER AND WM ELLIOTT IS NOW SECTOR 3 COMMANDER
14:18:09	****		Key HANTS INFORMED REF RELIEFS FOR WRC FORDINGBRIDGE
14:24:03	****	18P2	Status changed from IA - In Attendance to MH - Mobile Home
14:26:07	****	16P4	Status changed from MH - Mobile Home to RF - Refuel
14:27:28	****	14P1	Status changed from IA - In Attendance to MH - Mobile Home
14:27:50	****	21P1	Clear from incident 012211-27122012

14:29:16	****	13P1	Informative COMMAND SUPPORT NOW 13P1 - INFORMATIVE TO FOLLOW SHORTLY #
14:29:52	****	17C2	Status changed from IA - In Attendance to MH - Mobile Home
14:34:04	****	13P1	Key FF NEWPORT FROM STN 21 TO SEE IF HE IS AVAILABLE TO RELEIVE ONE OF THE WELFARE OPERATORS
14:35:37	****	17C2	Clear from incident 012211-27122012
14:35:40	****	16P4	Status changed from RF - Refuel to MH - Mobile Home
14:36:46	****	S16	Clear from incident 012211-27122012
14:36:46	****	S16	Status changed from 86 - In Attendance - Tomtom to 81 - Mobile Available - Tomtom
14:37:01	****	25P1	Clear from incident 012211-27122012
14:37:01	****	25P1	Current location changed from 19 to 25
14:37:59	****	18P2	Status changed from MH - Mobile Home to HS - Home Station
14:37:59	****	18P2	Clear from incident 012211-27122012
14:37:59	****	18P2	Current location changed from 17 to 18
14:39:49	****	13P1	Informative SM NAIRN NOW INCIDENT COMMANDER
14:39:57	****	16P4	Clear from incident 012211-27122012
14:39:57	****	16P4	Status changed from MH - Mobile Home to HS - Home Station
14:40:58	****	13P1	Key INFORMED THAT WE ARE UNABLE TO CONTACT ACM NEWPORT - DO YOU WISH US TO CONTACT ANY OTHER CREW MEMBERS ON STN 21 TO ATTEND THIS INCIDENT AS A RELIEF CREW MEMBER
14:41:04	****	14P1	Clear from incident 012211-27122012
14:42:18	****	13P1	Informative REF RELIEFS FOR WELFARE UNIT - AFFIRMATIVE TO WORKING THRO SNOWBALL LIST
14:42:54	****	26T3	Key HYDRANT IN USE OLD KILNE ROAD
14:45:44	****		Agency RSPCA Informed WESSEX WATER - INFORMED OF HYDRANT IN USE - ON KILNE ROAD
14:51:29	****	13P1	Tactical OFFENSIVE
14:51:29	****	13P1	Informative

		SM NAIRN - DETAILS AS PER PREVIOUS INFORMATIVE
14:52:35	****	Linked as parent of 012219-27122012
14:53:22	**** 26T3	HYDRANT DISCONTINUED
14:54:02	**** G2	Clear from incident 012211-27122012
14:54:02	**** G2	Status changed from IA - In Attendance to MA - Mob Avail
14:54:24	****	Key WM KEWLEY ASKED IF HE CAN SEND ONE MEMBER IN THE L4T FOR RELIEF OF CREW MEMBER FOR WELFARE VEHICLE
14:56:27	**** S24	Clear from incident 012211-27122012
14:56:27	**** S24	Status changed from 86 - In Attendance - Tomtom to 81 - Mobile Available - Tomtom
15:04:00	****	Key CALL FROM WILTSHIRE CONTROL AFTER UPDATE ON THEIR WATER CARRIER - 13P1 FINDING OUT
15:08:02	**** B4	Status changed from IA - In Attendance to 83 - Mobile to Home Address - Tom-tom
15:08:29	**** 13P1	Informative UNABLE TO GIVE YOU A TIME FOR THE WILTS WRC AT PRESENT BUT WILL GET BACK TO YOU
15:11:12	**** 13P1	Tactical OFFENSIVE
15:11:12	**** 13P1	Informative DETAILS AS PREVIOUS INFORMATIVE
15:11:25	**** 13P1	ETA OF RELIEF CREW FOR 07A1?
15:11:45	**** 13P1	ACK THEY ARE WITH SM BROWN WHOS TOM TOM SHOWS HIM AT BERE REGIS
15:14:48	**** N901	HYDRANT IN USE JCT OLD KILN RD
15:15:30	**** 13P1	ACK 21M1 EN ROUTE TO RELIEVE WM PARKES FROM 21S4
15:16:13	**** S7	Informative VIA EXTEL HAMPSHIRE AND WILTSHIRE WATER BOWSERS WILL BE RELEASED SHORTLY (IN NEXT HALF HOUR)
15:18:00	****	Key HAMPSHIRE AND WILTSHIRE CONTROLS UPDATED
15:18:53	**** B4	Clear from incident 012211-27122012
15:18:53	**** B4	Status changed from 83 - Mobile to Home Address - Tom-tom to 88 - Home Address

15:22:43	****	N901	available - Tom-tom HYDRANT NOW DISCONTINUED
15:29:46	****		Tag FIT Attendance added
15:32:19	****		Revised type changed from to PF - PROPERTY FIRE
15:35:01	****	13P1	Informative SM NAIRN - INCIDENT SCALING DOWN - WILTS AND HANTS WATER CARRIERS AVAILABLE SHORTLY - UNIMOG WILL ALSO BE RELEASED SHORTLY
15:35:01	****	13P1	Tactical OFFENSIVE
15:35:15	****	21S4	Officer in charge changed from WM PARKES to FF BARRETT
15:38:18	****	15P9	Status changed from IA - In Attendance to MH - Mobile Home
15:40:53	****		Key HANTS AND WILTS INFORMED REF THEIR APPLIANCES BEING RELEASED
15:48:24	****	S20	Status changed from 86 - In Attendance - Tomtom to 83 - Mobile to Home Address - Tom-tom
15:49:17	****	15P9	Status changed from MH - Mobile Home to RF - Refuel
15:56:29	****	13P1	Tactical OFFENSIVE
15:56:29	****	13P1	Informative SM NAIRN - DETAILS AS PER PREVIOUS INVOLVED - UNIMOG NOW RELEASED FROM INCIDENT
15:56:52	****	15P9	Status changed from RF - Refuel to MH - Mobile Home
16:00:06	****	S20	Status changed from 83 - Mobile to Home Address - Tom-tom to 88 - Home Address available - Tom-tom
16:00:06	****	S20	Clear from incident 012211-27122012
16:00:32	****	S26	Admin page to S26 - by Vodapage - MATT ROWE - CSI DORSET POLCE - MOBILE Redacted information FIRE - sent
16:03:03	****	15P9	Status changed from MH - Mobile Home to HS - Home Station
16:03:03	****	15P9	Clear from incident 012211-27122012
16:08:02	****	S26	Admin page to S26 - by Vodapage - URGENT - PLEASE CONTACT FIRE CONTROL - sent
16:08:06	****	S26	Admin page to S26 [24047] completed

16:17:52	****		Key FROM 13P1 - REQUEST WE NOTE THAT THE XCHURCH DAM FROM THE WATER BOWSER TO BE COLLECTED FROM THE INC AND TAKEN TO XCHURCH ASAP - BEING PASSED TO LOGISTICS
16:25:00	****	13P1	Tactical OFFENSIVE
16:25:00	****	13P1	Informative SM NAIRN - SCALING DOWN CONTINUING - RELOCATION OF PUMPS AND DAMS IN PROGRESS
16:27:06	****	S13	Clear from incident 012211-27122012
16:27:06	****	S13	Status changed from 86 - In Attendance - Tomtom to 81 - Mobile Available - Tomtom
16:29:00	****		Key CONTROL NOTE 13P1 - ARE BASED IN THE SCHOOL SM NAIRN MOBILE PHONE IS ALSO AN OPTION OF GETTING HOLD OF THEM - COMMAND SUPPORT WERE PASSED - THE DUTY MECHANIC MOBILE NUMBER SO THAT CREW ON 03P4 COULD LIASE WITH MECHANIC
16:29:38	****	13P1	Informative FROM SM NAIRN - RELIEF CREWS REQUIRED AT 1900 - 2 PUMPS 2 ALP CREWS AND 2 WATER BOWER CREW RELIEFS
16:30:38	****	YEO2	Status changed from MH - Mobile Home to BR - Home OTB Ret
16:30:48	****	YEO9W	Status changed from MH - Mobile Home to BW - Home OTB W/T
16:31:08	****		Key DUTY MECHANIC PUT THROUGHT TO COMMAND SUPPORT VIA SM NAIRNS MOBILE NUMBER
16:31:43	****	VG019	Current location changed from 17 to SHQ
16:31:43	****	VG019	Clear from incident 012211-27122012
16:31:43	****	VG019	Role set to
16:33:00	****		Key D&S TIMES FOR APPLIANCES YEO8 HOME STATION 14:29 YEO9W HOME STATION 14:42 YEO2 HOME STATION 14:38
16:35:39	****	S26	Status changed from 87 - At Incident

		available - Tomtom to AS - Assign
16:35:39	**** S26	Clear from incident 012211-27122012
16:35:39	**** S26	Role changed from Ops to Command Support
16:35:39	**** S26	Assigned to incident 012206-27122012
16:37:53	**** YEO8	Returned time changed from 16:31:09 27/12/2012 to 14:29:00 27/12/2012
16:38:02	**** YEO2	Returned time changed from 16:30:38 27/12/2012 to 14:38:00 27/12/2012
16:38:03	**** 26T3	Status changed from IA - In Attendance to MH - Mobile Home
16:38:03	**** N903	Status changed from IA - In Attendance to MH - Mobile Home
16:38:12	**** YEO9W	Returned time changed from 16:30:48 27/12/2012 to 14:42:00 27/12/2012
16:47:57	**** 12P1	Status changed from IA - In Attendance to MH - Mobile Home
16:55:00	**** 13P1	Informative FROM SM NAIRN - INCIDEN NOW SCALED DOWN TO 2 PUMP 2 ALP 2 WRC -
16:55:00	**** 13P1	Tactical OFFENSIVE
16:58:11	**** 07P1	Status changed from IA - In Attendance to MH - Mobile Home
16:59:42	**** 13P1	Key REQUEST RELIEF CREW FOR WELFARE VEHICLE AT 1900HRS
17:11:19	**** FOR9W	Status changed from IA - In Attendance to MH - Mobile Home
17:13:04	**** 13P1	Informative SM NAIRN - DETAILS AS PREVIOUS INFORMATIVE
17:13:04	**** 13P1	Tactical OFFENSIVE
17:19:09	**** WIL9W	Status changed from IA - In Attendance to MH - Mobile Home
17:22:24	****	Key SM NAIRN IS UP IN THE ALP - WILL CONTACT YOU REF RELIEFS AS SOON AS HE IS DOWN
17:29:29	**** 12P1	Status changed from MH - Mobile Home to HS - Home Station
17:29:29	**** 12P1	Clear from incident 012211-27122012
17:29:46	**** 07P1	Current location changed from 08 to 07
17:31:07	****	Key

			FROM WM JARVIS CAN PROVIDE CM MACFARLANE & 2 TO TAKE 26T3,N903 TO INCIDENT FOR 19:00
17:31:25	****	26T3	Clear from incident 012211-27122012
17:37:01	****		Key FROM SM NAIRN VIA EXTEL - SCALING DOWN FURTHER OF INCIDENT - ONLY REQUIRE 1 PUMP, 1 ALP CREW AND POSSIBLE 1 WRC CREW - 23A1 CAN BE RELEASED
17:38:38	****		Linked as parent of 012248-27122012
17:39:57	****	13P1	Tactical OFFENSIVE
17:39:57	****	13P1	Informative SM NAIRN INCIDENT IS BEING SCALED DOWN TO ONE PUMP ONE ALP ONE WATER CARRIER 23A1 ARE MAKING UP AND WILL BE AVAILABLE SHORTLY - INCIDENT IS NO LONGER SECTORISED
17:48:08	****	FOR9W	Key NOW CHANGING BACK TO HAMPSHIRE FREQUENCY
17:48:53	****	23A1	Assigned to incident 012206-27122012
17:53:33	****	N903	Assigned to incident 012211-27122012
17:53:33	****	26T3	Assigned to incident 012211-27122012
17:53:33	****	26T3	Status changed from MA - Mobile Avail to AS - Assign
17:53:33	****	N903	Status changed from MA - Mobile Avail to AS - Assign
17:53:37	****	26T3	Status changed from AS - Assign to MI - Mobile Incident
17:53:37	****	N903	Status changed from AS - Assign to MI - Mobile Incident
17:53:47	****	N903	Riders changed from 0 to 2
17:53:47	****	26T3	Riders changed from 0 to 2
17:53:47	****	26T3	Officer in charge changed from to CM MACFARLANE
17:53:47	****	N903	Officer in charge changed from to CM MACFARLANE
18:00:04	****	13P1	Informative SM NAIRN - AS PER PREVIOUS INFORMATIVE
18:00:04	****	13P1	Tactical OFFENSIVE
18:03:53	****	03T9	Remarks changed from

18:03:53	****	N901	Remarks changed from
18:06:54	****	03P4	Status changed from IA - In Attendance to MH - Mobile Home
18:06:54	****	03P4	Remarks changed from RE-FUELLING AREA
18:07:36	****	WIL9W	Informative CHANGING BACK TO WILTS FREQUENCY
18:09:50	****	03P1	Status changed from IA - In Attendance to MH - Mobile Home
18:10:03	****		Linked as parent of 012255-27122012
18:15:16	****	13P1	Tactical OFFENSIVE
18:15:16	****	13P1	Informative FROM SM NAIRN AS PER PREVIOUS INFORMATIVE
18:16:25	****		Key CONTROL NOTE WM PARKES CONTACTED TO ORGANISE RELIEF FOR WELFARE VEHILCE - WILL ORGANISE IT FROM DRILL NIGHT
18:19:51	****	N901	Status changed from IA - In Attendance to MH - Mobile Home
18:19:51	****	03T9	Status changed from IA - In Attendance to MH - Mobile Home
18:21:59	****	13P1	Key LIST OF OUTSTANDING EQUIPMENT TO BE MOVED AROUND - ONE THING IS THE DAMS FOR THE WATER BOWSER FOR CHRISTCHURCH - THESE HAVE NOW BEEN TAKEN BACK
18:22:30	****		Key CONTROL ADVISED 13P1 THAT CREWS NEED TO COMPLETE LOGISTIC REQUESTS VIA MIQUEST
18:26:40	****		Key STOP MESSAGE FROM ACFO ANSELL AT 12:10 PASSED TO HAMPSHIRE CONTROL
18:27:45	****	N903	Status changed from MI - Mobile Incident to IA - In Attendance
18:27:45	****	26T3	Status changed from MI - Mobile Incident to IA - In Attendance
18:31:32	****	21S4	Status changed from IA - In Attendance to MH - Mobile Home
18:31:32	****	21S4	Key NO LONGER REQUIRED AT THIS INCIDENT
18:40:31	****	S7	Admin page to S7 - by Vodapage - PLEASE CONTACT BM GUNTER ON -redacted

		number sent
18:40:35	**** S7	Admin page to S7 [24078] completed
18:43:46	****	Action Inform CFO (on and off duty) for incidents involving Comment BM GUNTER CONTACTED CONTROL - UPDATED WITH APPLIANCES STILL AT INCIDENT - ASKED FOR CONTROL TO PAGE SM NAIRN TO CONTACT HIM ON HIS MOBILE - DONE
18:46:14	**** 13P1	Status changed from IA - In Attendance to MH - Mobile Home
18:46:14	**** 13P1	Informative NO LONGER REQUIRED- MOBILE TO BERE REGIS FOR EQUIPMENT RETURN
18:52:03	**** 05P1	Informative WE ARE NOW CONTACT POINT FOR THIS INCIDENT
18:53:29	**** 21S4	Clear from incident 012211-27122012
18:59:32	**** 13P1	Informative AT STN14 REMAINING ON THE AIR
18:59:49	**** 18P1	Assigned to incident 012211-27122012
18:59:49	**** 18P1	Status changed from HS - Home Station to AS - Assign
18:59:49	****	Mobilisation MB Turnout 18P1 (V) to 012211-27122012
18:59:56	**** 18T9	Status changed from IA - In Attendance to MH - Mobile Home
18:59:56	**** N902	Status changed from IA - In Attendance to MH - Mobile Home
19:00:06	**** 18P1	Status changed from AS - Assign to MI - Mobile Incident
19:00:17	**** 03P4	Clear from incident 012211-27122012
19:07:27	**** 18T9	Clear from incident 012211-27122012
19:07:27	**** N902	Clear from incident 012211-27122012
19:14:08	**** 18P1	Status changed from MI - Mobile Incident to IA - In Attendance
19:14:14	**** 18P1	Informative CLOSING ON CONTACT POINT
19:16:39	**** 03P1	Status changed from MH - Mobile Home to HS - Home Station
19:16:39	**** 03P1	Clear from incident 012211-27122012
19:17:48	**** N901	Clear from incident 012211-27122012
19:17:48	**** 03T9	Clear from incident 012211-27122012
19:18:24	**** 05P1	Remarks changed from CHAIN FERRY AWAITING ARRIVA;

19:24:29	****	07A1 RELIEF CREW ARE IN ATTENDANCE
19:26:18	****	Key SM NAIRN VALUABLE KIT WILL BE PUT IN VAN THAT BOUGHT WEYMOUTH RELIEFS AND TAKEN BACK TO WEYMOUTH
19:27:35	**** 13P1	Clear from incident 012211-27122012
19:38:20	**** WIL9W	Clear from incident 012211-27122012
19:38:20	**** WIL9W	
19:38:34	**** WIL9W	Returned time changed from 19:38:20 27/12/2012 to 18:49:20 27/12/2012
19:41:14	****	Key WILTS UPDATED WITH STOP AND RETURN TIME RECEIVED FOR WIL9W
19:44:15	**** 05P1	Informative FROM SM NAIRN 18P1 IS NOW COMMAND SUPPORT FOR THIS INCIDENT WATER CARRIER NO LONGER REQUIRED
19:44:27	**** FOR9W	Clear from incident 012211-27122012
19:44:27	**** FOR9W	Key NOW HOME STATION CLOSED AT 18:04
19:46:06	**** FOR9W	Returned time changed from 19:44:27 27/12/2012 to 18:04:27 27/12/2012
19:50:35	**** O2	Clear from incident 012211-27122012
20:01:37	**** 05P1	Informative REFUELLING AT BERE REGIS
20:33:06	**** N903	Clear from incident 012211-27122012
20:33:06	**** 26T3	Clear from incident 012211-27122012
20:33:06	**** 26T3	Status changed from MH - Mobile Home to HS - Home Station
20:37:45	**** 05P1	Clear from incident 012211-27122012
20:58:49	**** 18P1	Informative FROM SM NAIRN ALL DETAILS AS PER LAST INFORMATIVE
20:58:49	**** 18P1	Tactical OFFENSIVE
21:18:49	**** 18P1	Tactical OFFENSIVE
21:18:49	**** 18P1	Informative FROM SM NAIRN ALL DETAILS AS PER LAST INFORMATIVE
21:28:07	**** 18P1	Informative SM NAIRN INCIDENT NOW HANDED OVER TO CM CHAVE - 18P1 REMAINING ON SCENE WITH

			07A1 UNTIL 2230HRS, REINSPECTION OF SITE REQUESTED AT 0200HRS BY 18P1 AND FURTHER RE-INSPECTION AT 0830HRS, SECURITY GUARD ON SIRE BRIEFED FOR SAFETY OF PREMISES AND HAS FIRE CONTROL DIRECT LINE SHOULD THEYHAVE ANY CONCERNS. S7 AVAILABLE IF REQUIRED
21:28:14	****	18P1	Tactical OFFENSIVE
21:31:54	****	S7	Status changed from 86 - In Attendance - Tomtom to 81 - Mobile Available - Tomtom
21:31:54	****	S7	Clear from incident 012211-27122012
21:46:28	****	18P1	Tactical DEFENSIVE
21:46:28	****	18P1	Informative FROM CM CHAVE ALP IN USE FOR INSPECTION ONLY
21:54:52	****	18P1	Informative HYDRANT WITHIN SCHOOL GROUNDS IS NOW IN USE
21:55:23	****		Agency Water Informed
22:04:22	****	18P1	Tactical OFFENSIVE
22:04:22	****	18P1	Informative FROM CM CHAVE ALP IN USE DAMPING DOWN HOTSPOTS GOOD PROGRESS BEING MADE
22:39:25	****	FDU2	Status changed from IA - In Attendance to HS - Home Station
22:39:25	****	FDU2	Clear from incident 012211-27122012
22:50:19	****	18P1	Informative FROM CM CHAVE COPIOUS AMOUNTS OF WATER APPLIED VIA MONITOR ON AERIAL LADDER PLATFORM INSPECTION FROM ABOVE REVEALS NO VISIBLE HOT SPOTS AT THIS TIME. SECURITY GUARDS ON SITE WILL PATROL AND INFORM FIRE CONTROL VIA 999 IF FIRE SERVICE IS NEEDED RECOMMEND REINSPECTION AT 0700 HRS
22:56:49	****	18P1	Remarks changed from
23:04:46	****	18P1	Clear from incident 012211-27122012
23:04:46	****	18P1	Remarks changed from MOBILE VIA BAKERS ARMS ROUNDABOUT TO LIAISE WITH 07A1
23:45:48	****	07A1	Status changed from RF - Refuel to MH -

		Mobile Home
23:55:33	****	Status changed from S - Stop to F - Finished
23:55:33	**** 07A1	Clear from incident 012211-27122012
23:55:33	**** 07A1	Current location changed from 17 to 07
28/12/2012		
07:00:28	**** 18P1	Status changed from HS - Home Station to AS - Assign
07:00:39	**** 18P1	Status changed from AS - Assign to MI - Mobile Incident
07:00:39	**** 18P1	Key MOBILE FOR RE-INSPECTION
07:00:49	**** 18P1	Riders changed from 4 to 5
07:10:36	**** 18P1	Current location changed from 18 to 17
07:10:36	**** 18P1	Status changed from MI - Mobile Incident to IA - In Attendance
07:33:06	**** 18P1	Informative FROM CM CHAVE ONE SMALL AREA OF SCHOOL STILL SMOULDERING HOWEVER IT IS DIFFICULT TO REACH AND WOULD SUGGEST THAT ALP FROM WESTBOURNE AND 1 CREW FROM POOLE TO RETURN AFTER CHANGE OF SHIFT TO EXTINGUISH IT SAFELY
07:33:25	**** 18P1	Key INCIDENT LEFT OPEN FOR THE DAY WATCH
07:33:25	**** 18P1	Status changed from IA - In Attendance to MH - Mobile Home
07:43:31	****	CONTROL NOTE WESTBOURNE NIGHT WATCH ASKED TO INFORM DAY WATCH TO ATTEND ASAP AFTER 0800HRS
07:44:21	**** 18P1	Clear from incident 012211-27122012
07:55:25	****	CONTROL NOTE CM CHAVE INFORMING DAY CREW OF REINSPECTION DETAILS
08:10:02	**** 23A1	Assigned to incident 012211-27122012
08:10:02	****	Mobilisation HT Turnout 23A1 (V) to 012211-27122012
08:10:02	**** 23A1	Status changed from HS - Home Station to AS - Assign
08:10:10	**** 23A1	Status changed from AS - Assign to MI - Mobile Incident
08:38:23	**** 23A1	Status changed from MI - Mobile Incident to IA - In Attendance
08:38:48	**** 18P1	Status changed from MA - Mobile Avail to AS

08:38:48	****		- Assign Mobilisation BJB Turnout 18P1 (V) to 012211-27122012
08:38:48	****	18P1	Assigned to incident 012211-27122012
08:38:56	****	18P1	Status changed from AS - Assign to MI - Mobile Incident
08:39:08	****	18P1	Riders changed from 5 to 4
08:45:54	****	18P1	Status changed from MI - Mobile Incident to IA - In Attendance
08:45:54	****	18P1	
08:55:46	****		Key CALL FROM WESSEX WATER REP - HE IS NOW GOING TO RETURN THE WATER PRESSURE TO NORMAL. IF FOR ANY REASON WE REQUIRE THE PRESSURE TO BE RAISED AGAIN, JUST CONTACT WESSEX WATER CONTROL PHONE.
09:04:12	****	B4	Assigned to incident 012211-27122012
09:04:12	****	B4	Status changed from 90 - Home Address Off Duty - Tomtom to AS - Assign
09:04:24	****	B4	Status changed from AS - Assign to 86 - In Attendance - Tomtom
09:04:47	****		Address changed from LYTCHETT MINSTER SCHOOL,LYTCHETT MINSTER SCHOOL,POST GREEN ROAD,,LYTCHETT MINSTER,,BH166JD to ,LYTCHETT MINSTER SCHOOL,POST GREEN ROAD,,LYTCHETT MINSTER,,BH166JD
09:04:54	****	23A1	Officer in charge changed from CM WIMBORNE to CM WINBORN
09:05:40	****	18P1	Informative CM COLCLOUGH.... INVESTIGATION OF PREIMETER OF PREMISE IN PROGRESS ALP I N USE TOI ASSIST INVESTIGATION ...OFFENSIVE
09:06:01	****	18P1	Tactical OFFENSIVE
09:29:43	****	18P1	Tactical OFFENSIVE
09:56:59	****	18P1	Informative NURSERY PUMP TO PROCEED AT NORMAL ROAD SPEED
09:57:12	****	18P1	Informative NURSERY PUMP REQUIRED FOR BRONTO SKYLIFT
09:57:39	****		Details changed from 23A1 TO PROCEED AS

		RELIEF ALP - NO SUPPORT PUMP REQUIRED. to 18P4 TO PROCEED AS NURSERY PUMP
09:57:43	**** 18P4	Status changed from HS - Home Station to AS - Assign
09:57:43	****	Mobilisation JS1 Turnout 18P4 (R) to 012211-27122012
09:57:43	****	Mobilisation JS1 Turnout to 012211-27122012
09:57:43	**** 18P4	Assigned to incident 012211-27122012
09:57:47	**** 18P4	Status changed from AS - Assign to 51 - Alerted Incident
09:57:47	****	Incident turnout to 18 for 18P4 completed [24228]
10:05:20	****	Key CONTACTED STN 18 - ONE RETAINED CM IS NOW IN ATTENDANCE AD HAS PUT THE BELLS IN AGAIN LOCALLY
10:06:09	****	Key SPOKE TO CM COLE WILL BE LEAVING SHORTLY
10:12:01	**** 18P4	Status changed from 51 - Alerted Incident to MI - Mobile Incident
10:12:07	**** 18P4	Officer in charge changed from to CM COLE
10:12:07	**** 18P4	Riders changed from 0 to 4
10:12:17	**** 18P4	Informative MOBILE NORMAL ROAD SPEED
10:13:18	**** 18P1	Informative CM COLCLOUGH SALVAGE OPERATIONS NOW IN PROGRESS
10:13:18	**** 18P1	Tactical OFFENSIVE
10:14:16	**** 18P1	Crew member(s) Mobile 18P1 added
10:14:16	**** 18P1	Riders changed from 4 to 1
10:15:55	**** B4	Admin page to B4 - by Vodapage - PLEASE CONTACT CONTROL REF MERIDIAN WISHING TO DO INTERVIEW FOR THIS INCIDENT - sent
10:22:00	****	FRM SM ARUNDEL - 18P1 TO MAKE CONTAC VIA MOBILE. DONE
10:24:08	**** 18P4	Current location changed from 18 to 17
10:24:08	**** 18P4	Status changed from MI - Mobile Incident to IA - In Attendance
10:25:34	****	Key ACFO ANSELL GIVEN DETAILS OF MEL

			FROM ITV MERIDIAN - HE WILL CONTACT HER
10:41:43	****	18P1	Informative CM COLCLOUGH DAMPING DOWN OF SMOULDERING AREAS VIA USE OF ALP
10:41:43	****	18P1	Tactical OFFENSIVE
10:59:12	****	18P1	Tactical OFFENSIVE
11:02:24	****		Key FROM SM CREIGHTON WHEN FDO IS REQUIRED TO ATTEND FOR OFFICER HANDOVER NOTIFY ME AND I WILL PROCEED TO INCIDENT
11:21:23	****	18P1	Tactical CM COLCLOUGH OFFENSIVE
11:41:01	****	18P1	Informative CM COLCLOUGH DAMPING DOWN NOW COMPLETE ALP NO LONGER IN USE
11:41:01	****	18P1	Tactical OFFENSIVE
11:46:06	****	23A1	Status changed from IA - In Attendance to MH - Mobile Home
11:47:00	****	18P1	Key REINSPECTION AT 1400HRS
11:47:00	****	18P1	Status changed from IA - In Attendance to MH - Mobile Home
11:50:50	****	18P4	Status changed from IA - In Attendance to MH - Mobile Home
11:58:30	****	18P4	Current location changed from 17 to 18
11:58:30	****	18P4	Clear from incident 012211-27122012
11:58:30	****	18P4	Remarks changed from INTERMITTENT RADIO PROBLEMS
12:05:20	****	B4	Status changed from 86 - In Attendance - Tomtom to 83 - Mobile to Home Address - Tom-tom
12:12:53	****	18P1	Status changed from RF - Refuel to MH - Mobile Home
12:15:52	****	B4	Status changed from 83 - Mobile to Home Address - Tom-tom to 90 - Home Address Off Duty - Tomtom
12:15:52	****	B4	Clear from incident 012211-27122012
12:19:38	****	18P1	Clear from incident 012211-27122012
12:21:19	****	23A1	Clear from incident 012211-27122012
13:56:36	****	18P2	Status changed from MA - Mobile Avail to AS

		- Assign
13:56:36	**** 18P2	Assigned to incident 012211-27122012
13:56:36	****	Mobilisation LC Turnout 18P2 (V) to 012211-27122012
13:56:40	**** 18P2	Status changed from AS - Assign to MI - Mobile Incident
14:04:56	**** 18P2	Status changed from MI - Mobile Incident to IA - In Attendance
14:28:42	****	Mobilisation JS1 Turnout S10 (P , T) to 012211-27122012
14:28:42	**** S10	Status changed from 92 - Pager Contact - Tomtom to AS - Assign
14:28:42	**** S10	Assigned to incident 012211-27122012
14:28:42	**** S10	Role changed from Ops to Command Support
14:28:47	**** S10	Status changed from AS - Assign to AL - Alerted Incident
14:28:48	****	Incident turnout to S10 for S10 completed [24288]
14:28:55	**** S10	Status changed from AL - Alerted Incident to 82 - Mobile to Incident - Tomtom
14:28:59	**** S10	Status changed from 82 - Mobile to Incident - Tomtom to 86 - In Attendance - Tomtom
14:30:48	****	Incident turnout to S10 for S10 failed [24289]
14:55:41	**** 18P2	Informative CM COLCLOUGH INVESTIGATION ALONGSIDE STRUCTURAL ENGINEER IN PROGRESS
14:55:41	**** 18P2	Tactical DEFFENSIVE
15:00:35	**** 18P2	Status changed from IA - In Attendance to MH - Mobile Home
15:12:25	**** 18P2	Current location changed from 17 to 18
15:12:25	**** 18P2	Status changed from MH - Mobile Home to HS - Home Station
15:12:25	**** 18P2	Clear from incident 012211-27122012
15:21:52	****	Key CM COLCLOUGH INC NOW IN SM CREIGHTON HANDS, NO FURHTER INSPECTION FROM FIRE CREWS SM CREIGHTON WILL MONITOR THE FIRE HE WILL BE IN CONTACT WITH THE 24 ON SITE SECURITY AND BLDG INSPECTOR. FIRE BEL TO BE OUT INC WILL REMAIN OPEN UNTIL SM CREIGHTON STATES OTHER WISE

15:48:27	****	S10	Clear from incident 012211-27122012
15:48:27	****	S10	Status changed from 86 - In Attendance - Tomtom to 81 - Mobile Available - Tomtom
16:48:15	****		Key SM CREIGHTON FOLLOWING DISCUSSION WITH DORSET COUNTY COUNCIL ESTATE MANAGER - ROLAND JULIAN - INCIDENT HANDOVER TO COUNTY WILL TAKE PLACE ON MONDAY 31/12/12 - KESTREL SECURITY APPOINTED ON SITE WILL LIAISE DIRECTLY WITH MYSELF AND I WILL BE CARRYING OUT OBSERVATIONS ACROSS THE WEEKEND - ANY CONCERNS PASS TO ME FIRST KESTREL SECURITY CONTACT DETAILS: Redacted information
29/12/2012			
13:11:22	****		Key SM CREIGHTON - WILL NOT BE CLOSED UNTIL MONDAY MORNING.
31/12/2012			
10:12:09	****		Key FROM SM CRIEGHTON VIA EXTEL RE ATENDING AT 1100HRS - REQUEST 2 CREWS FROM POOLE TO RE ATTEND AT 1100 HRS TO ASSIST WITH SALVAGE. ANTICIPATING COVER AT POOLE UNTIL AT LEAST 1400 HRS. PLEASE INFORM BM CHAPMAN AND GM LEGG
10:49:55	****		Mobilisation SH Turnout 18P1 (V) to 012211-27122012
10:49:55	****	18P1	Assigned to incident 012211-27122012
10:49:55	****	18P1	Status changed from MA - Mobile Avail to AS - Assign
10:50:00	****	18P1	Status changed from AS - Assign to MI - Mobile Incident
10:50:44	****	18P2	Status changed from MA - Mobile Avail to AS - Assign
10:50:44	****	18P2	Assigned to incident 012211-27122012
10:50:44	****		Mobilisation SH Turnout 18P2 (V) to 012211-27122012
10:50:44	****		Mobilisation SH Turnout to 012211-27122012
10:50:50	****	18P2	Status changed from AS - Assign to MI - Mobile Incident

11:00:58	****	18P1	Status changed from MI - Mobile Incident to IA - In Attendance
11:03:00	****	18P2	Status changed from MI - Mobile Incident to IA - In Attendance
12:09:42	****		Key FROM SM CREIGHTON VIA EXTEL SALVAGE OPERATIONS WELL UNDER WAY - GOOD PROGRESS BEING MADE
12:21:09	****	S24	Role changed from Command Support Officer to Command Support
12:21:09	****	S24	Status changed from 92 - Pager Contact - Tomtom to AS - Assign
12:21:09	****	S24	Assigned to incident 012211-27122012
12:21:09	****	S10	Role changed from Ops to Command Support
12:21:09	****		Mobilisation SH Turnout S10 (P); S24 (P) to 012211-27122012
12:21:09	****	S10	Status changed from 92 - Pager Contact - Tomtom to AS - Assign
12:21:09	****	S10	Assigned to incident 012211-27122012
12:21:14	****		Incident turnout to S10 for S10 completed [24785]
12:21:14	****	S10	Status changed from AS - Assign to AL - Alerted Incident
12:21:15	****	S10	Status changed from AL - Alerted Incident to IA - In Attendance
12:21:15	****	S24	Status changed from AS - Assign to IA - In Attendance
12:21:16	****		Incident turnout to S24 for S24 completed [24786]
12:50:43	****		Informative SM JENESON VIA EXTEL - SALVAGE OPERATION NOW COMPLETED INCIDENT HANDOVER ON PROGRESS BOTH POOLE CREWS AVAILABLE
12:50:49	****	18P1	Status changed from IA - In Attendance to AV - Avail Incident
12:50:52	****	18P2	Status changed from IA - In Attendance to AV - Avail Incident
12:53:09	****	18P1	Status changed from AV - Avail Incident to MH - Mobile Home
12:53:21	****	18P2	Status changed from AV - Avail Incident to MH - Mobile Home
13:01:23	****	18P2	Clear from incident 012211-27122012
13:02:08	****	18P1	Clear from incident 012211-27122012

13:29:18	****	S24	Clear from incident 012211-27122012
13:29:18	****	S24	Status changed from IA - In Attendance to 81 - Mobile Available - Tomtom
13:31:25	****	S10	Clear from incident 012211-27122012
13:31:25	****	S10	Status changed from IA - In Attendance to 81 - Mobile Available - Tomtom
13:33:58	****		Key SM CREIGHTON INCIDENT HANDOVER NOW COMPLETE AND LEFT IN HANDS OF SCHOOL INCIDENT CAN NOW BE CLOSED
15:55:18	****		Key CFO & GM MORGAN AT FIRE CONTROL EARLIER THIS AFTERNOON GM MORGAN REQUEST DETAILS OF CALLS - CYBERTECH CALLS RECORDED VIA WAV AND EMAILED TO GM MORGAN
16:57:44	****		Incident Closed
02/01/2013			
11:21:45	****		Incident reopened
11:23:05	****		Key SM CREIGHTON CAUSE - LIGHTENING STRIKE DAMAGE - 100% OF BUILDING SEVERELY DAMAGED BY FIRE
11:23:05	****		Incident Closed

End of Log - 012211

13

Signatures

Fire Investigation Officer
Name

Signature
Date

Report validated by
Name
Signature
Position
Date

Appendix A

Statement produced by Crew Manager Courtice and Fire-fighter Tompkins in relation to their observations and actions as the first Dorset Fire and Rescue Service fire fighting crew to arrive.

**RetainedCMe Dorchester/Retained/Dorset
Fire Brigade**

04/01/2013 00:31

To White WM Poole/white/Dorset Fire Brigade@Dorset Fire
Brigade, White CM2 Poole/white/Dorset Fire
Brigade@Dorset Fire Brigade

cc

Subj Account/Observations For Incident 12211 Lytchett School
ect from FF Tompkins

Account of my actions and observations at Incident 12211 Lytchett Minster School on the 27/12/2012.
CM Courtice 14246

I was riding number 3 position on 18P2 and was first in attendance at the incident. To gain access to the property we had to bolt crop the padlock on the gate.

The fire was visible in the centre of the roof of the building. The building was secure and myself, FF Tompkins and FF Stewart gained access to it by breaking the glass door of a fire exit. I heard no alarm sounding and the ground floor was free from smoke.

We proceeded to the first floor which was again free from smoke, we were able to use the lights in the building to aid us. In at least three areas of the first floor we saw large puddles of water coming from the roof space but the fire was only visible through the glass skylights. We exited the building to try and gain access to the fire via ladder which we were unable to do because of the design of the roof we had no direct line of sight to the fire. We then gained access via another part of the building and then saw smoke on the first floor, myself and FF Tompkins donned BA and entered with a hose reel jet.

On arrival on the first floor there was a noticeable difference in conditions. The hall way was now smoke logged with large pieces of hot(and liquid) metal falling through the ceiling, a message was sent requesting another BA team with a main jet. On the second teams arrival it was obvious that we were not going to be able to extinguish the fire internally and was soon told to exit the building for safety reasons by the OIC. At this time we could hear debris falling down the lift shaft. We exited the building and went for debrief at the ECO.

Account of my actions and observations at Incident 12211 Lytchett Minster School on the 27/12/2012.

I was the number 4 position on 18P2 (first appliance in attendance) from Poole Fire Station.

On arrival at the incident from the road leading from Lytchett Minster Village, I noticed a small amount of fire in the distance from the roof of a building. I informed the Officer in Charge of my appliance (WM Dave Cooper), that i could see the fire in the distance.

My OIC instructed me to take a Hand Held Radio and to go on foot towards the building and investigate the extent and exact location of fire while they made access for the appliance, via the locked gate.

I proceeded around the front of the Main School (old/original part) on the grass area to the building that had the fire on the roof. On my arrival at the building involved in fire, I could hear an alarm sounding from the building. The alarm was a bell type. A fire was evident on the roof of the building.

I radioed my OIC and past information that I could hear an alarm actuating from the building and a sizable fire was visible on the roof.

I could not see any signs of fire in any other window from my current location on the ground floor, nor any forced or broken access points to the building. I noticed the Fire Alarm panel at the main foyer of the building was indicating a fire. The panel could be viewed from outside the door as the door was of glass construction. I had only surveyed the exterior on three sides of the building when I met the rest of my crew with the appliance at the rear of the premise, adjacent to the fenced sports area.

With instruction from the OIC, Myself, FF Stewart and CM Courtice made a forced entry to the ground floor of the building, via a rear Fire Exit by smashing the glass and releasing the push bar to open the door. We all made entry (without BA), to a smoke free corridor that lead to a stair case. As we passed light switches, I switched them on to illuminate our way through the corridor to a stair case. There were no signs/evidence of fire or smoke on the ground floor. I do not remember any audible alarm within the building after initial entrance.

We all ascended the stairs to the first floor area. The corridors and class rooms on the first floor were all smoke free and the main lighting was fully functioning using the light switches. There were two large water leaks pouring from the ceiling in the first floor corridor. Fire/flame was visible through Velux windows in the first floor ceiling but no windows had at this stage been compromised. We were unable to find access to the fire from this part of the building even though we could see it through the Velux windows.

The three of us returned the way we came into the building and exited to the outside.

CM Courtice and myself were instructed by the OIC to prepare BA and make an entry via the front main foyer with a hose reel, to investigate possible access to the fire using the staircase just inside the main door. A forced entry was made and I removed the fire plan from above the Fire Panel and gave it to the OIC (WM Cooper). The foyer was free of any smoke or evidence of fire. I do not remember any audible alarms within the building at this stage.

After donning BA, CM Courtice and myself proceeded to the first floor with a hose reel and TIC. The first floor was now showing light smoke logging through the double fire doors located at the top of the main stair case. Visibility at this stage was good in both directions of the corridor on the first floor.

After a short period of time, 5-10 mins, conditions inside the corridor on the first floor deteriorated very quickly. Visibility went down to zero and a serious fire was now evident in the ceiling area and class rooms. Molten lead and debris was cascading down from above and a request to Alpha entry control was made for a second BA team with a main line.

A second BA team with a main line joined us at our location at the top of the stairs on the first floor. Using the TIC, I could direct the jets onto the fire, however it was now evident that the fire had reached a point where our efforts were futile. The call came from Alpha entry control to evacuate the first floor due to roof collapses. Both teams retreated to the ground floor and made efforts to contain the fire from the ground floor. CM Courtice and I exited the building due to our air quantities from our BA.